

- | | | | |
|-----|---|-----|--|
| 1. | Metal Studs wall cavity | 9. | Balcony structure |
| 2. | Substrate | 10. | Soffit panel (per arch specs.) |
| 3. | Moisture barrier | 11. | Mineral wool type insulation (thickness per spec.) |
| 4. | Vertical support aluminum extrusion | 12. | Backer rod and sealant |
| 5. | Alum. horizontal Z-girts (or double L angles) | 13. | Formed aluminum closure |
| 6. | LONGOTON® terra cotta panel | 14. | Formed aluminum clip (as req.) |
| 7. | Terra cotta panel middle aluminum clip | 15. | Panels beyond |
| 7.1 | Terra cotta panel top aluminum clip | 16. | Pressure gasket |
| 8. | Formed aluminum continuous J-trim | 17. | Stainless steel spring clip |

Version-7.0

SYSTEM: LONGOTON	DETAIL No.	OPTION.
M2	16	a

TERMINATION DETAIL @ SOFFIT (FULL PANEL)

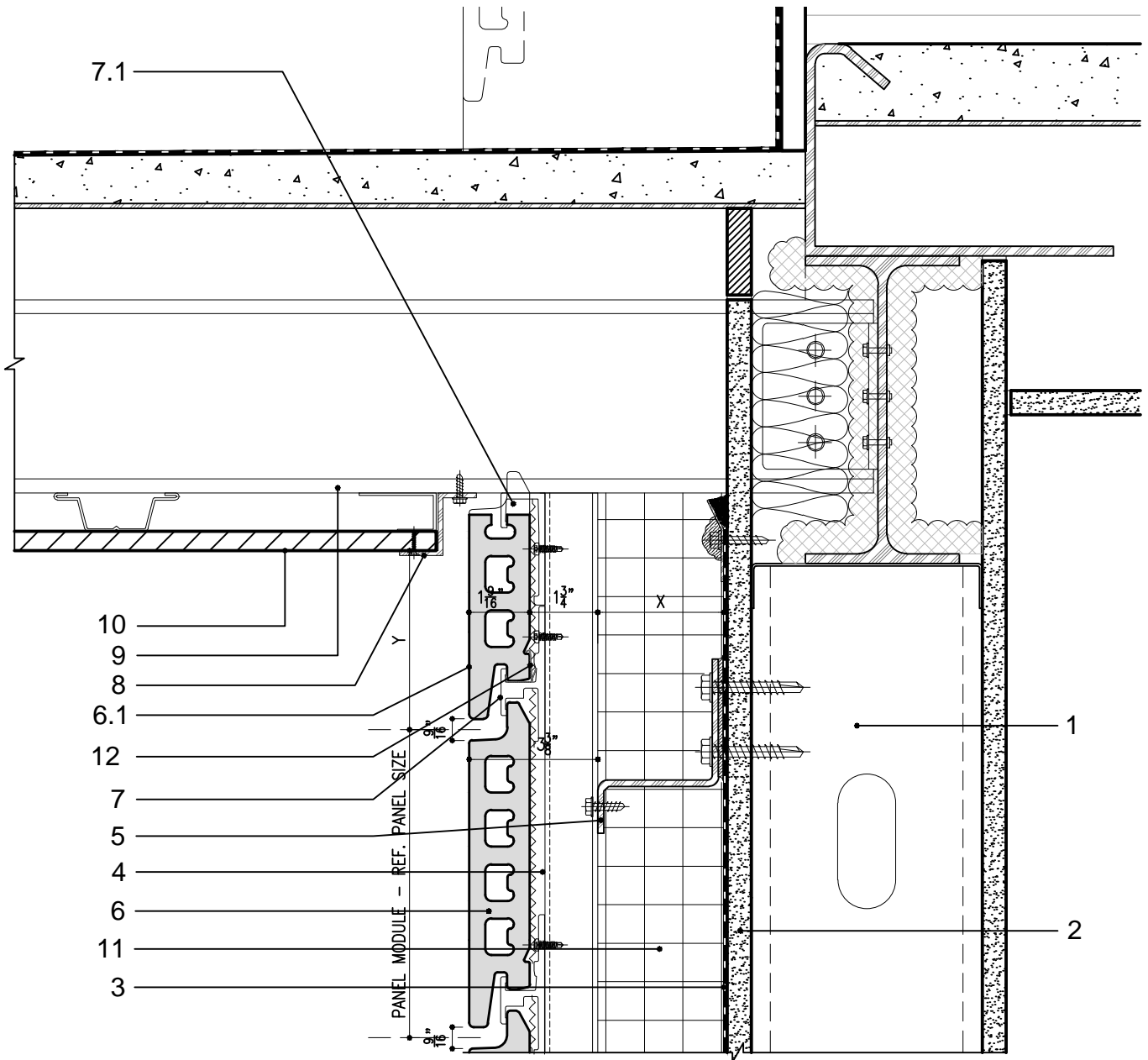
Note: This is conceptual detail; project specific details must be reviewed with Shildan



Shildan, Inc.

2047 Briggs Road
Mount Laurel, NJ 08054
T: (215) 525-4510
F: (215) 525-4511

©2008 by Shildan, Inc.



- | | | | |
|-----|--|-----|--|
| 1. | Metal Studs wall cavity | 9. | Balcony structure |
| 2. | Substrate | 10. | Soffit panel (per arch specs.) |
| 3. | Moisture barrier | 11. | Mineral wool type insulation (thickness per spec.) |
| 4. | Vertical support aluminum extrusion | 12. | Stainless steel spring clip |
| 5. | Aluminum horizontal Z-girts (or double L angles) | | |
| 6. | LONGOTON® terra cotta panel | | |
| 6.1 | LONGOTON® terra cotta panel cut to size | | |
| 7. | Terra cotta panel middle aluminum clip | | |
| 7.1 | Terra cotta panel top aluminum clip | | |
| 8. | Formed aluminum soffit termination z-clip | | |

Version—7.0

SYSTEM: LONGOTON	DETAIL No.	OPTION.
M2	16	b

**TERMINATION DETAIL
@ SOFFIT (CUT PANEL)**

Note: This is conceptual detail; project specific details must be reviewed with Shildan



Shildan, Inc.

2047 Briggs Road
Mount Laurel, NJ 08054
T: (215) 525-4510
F: (215) 525-4511

©2008 by Shildan, Inc.