

- | | | | |
|-----|--|-----|---|
| 1. | Metal Studs wall cavity | 10. | Base cover per architectural specs. |
| 2. | Substrate | 11. | Concrete curb |
| 3. | Moisture barrier | 12. | Mineral wool type insulation
(thickness per spec.) |
| 4. | Vertical support aluminum extrusion | 13. | Grade |
| 5. | Aluminum horizontal Z-girts (or double L angles) | 14. | Insulation at thermal bridges (per spec.) |
| 6. | LONGOTON® terra cotta panel | 15. | Pressure gasket |
| 7. | Terra cotta panel middle aluminum clip | | |
| 7.1 | Terra cotta panel bottom aluminum clip | | |
| 8. | Aluminum or stainless steel flashing set on a mastic bed | | |
| 9. | Flashing support clip | | |

Version-7.0

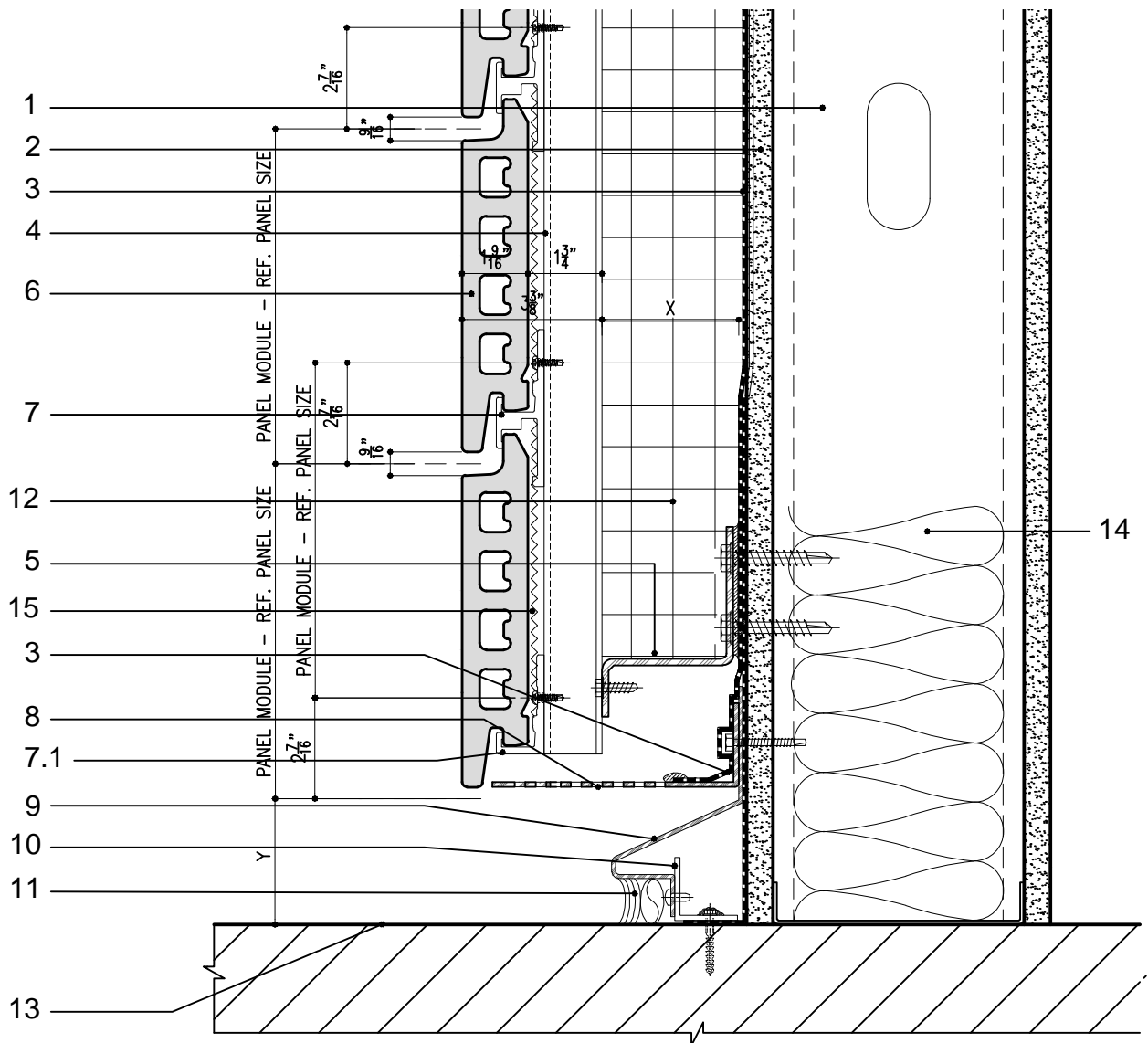
SYSTEM: LONGOTON	DETAIL No.	OPTION.
M2	11	a

TERMINATION DETAIL AT GRADE. FLUSH W/ BASE

Note: This is conceptual detail; project specific details must be reviewed with Shildan



Shildan, Inc.
 2047 Briggs Road
 Mount Laurel, NJ 08054
 T: (215) 525-4510
 F: (215) 525-4511
 ©2008 by Shildan, Inc.



- | | |
|--|--|
| <ul style="list-style-type: none"> 1. Metal Studs wall cavity 2. Substrate 3. Waterproofing membrane 4. Vertical support aluminum extrusion 5. Aluminum horizontal Z-girts (or double L angles) 6. LONGOTON® terra cotta panel 7. Terra cotta panel middle aluminum clip 7.1 Terra cotta panel bottom aluminum clip 8. Aluminum perforated formed closure 9. Formed aluminum or stainless steel flashing | <ul style="list-style-type: none"> 10. Aluminum clip angle 11. Backer rod and sealant 12. Mineral wool type insulation (thickness per spec.) 13. Grade 14. Insulation at thermal bridges (per spec.) 15. Pressure gasket |
|--|--|

Version-7.0

SYSTEM: LONGOTON	DETAIL No.	OPTION.
M2	11	b

TERMINATION DETAIL AT GRADE. FLOATING.

Note: This is conceptual detail; project specific details must be reviewed with Shildan



Shildan, Inc.
 2047 Briggs Road
 Mount Laurel, NJ 08054
 T: (215) 525-4510
 F: (215) 525-4511
 ©2008 by Shildan, Inc.