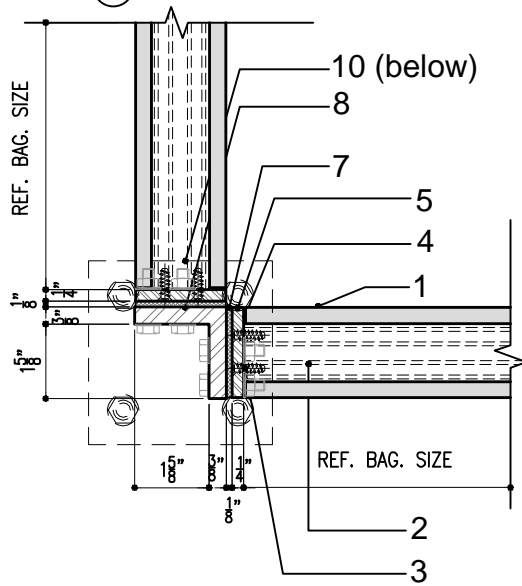
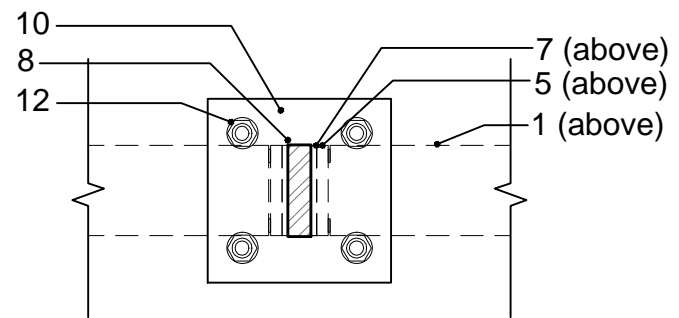


1 PLAN DETAIL - CENTER CONDITION

2 PLAN DETAIL - END CONDITION



3 PLAN DETAIL - CORNER CONDITION



4 PLAN DETAIL - AT FLOOR PLATE

- 1- Terra Cotta Baguette Module
- 2- Aluminum Reinforcement Inner Tube
- 3- Countersunk Screw, Stainless Steel Recommended
- 4- Gasket
- 5- 1/4" Aluminum End Plate
- 6- Bolt, Stainless Steel Recommended
- 7- Optional Insulating Shim
- 8- Continuous Painted Aluminum Carrier Plate / Railing Post
- 9- Painted Aluminum Tie-Back Bracket
- 10- Steel Floor Plate (welded to Carrier Plate)
- 11- Base Anchors

Version-5

SYSTEM:

**Baguette**

DETAIL No.

**2**

OPTION.

**h**

**PLAN DETAIL  
AT RAILING**

Note: This is conceptual detail; project specific details must be reviewed with Shildan



**Shildan, Inc.**  
 2047 Briggs Road  
 Mount Laurel, NJ 08054  
 T: (215) 525-4510  
 F: (215) 525-4511  
 ©2008 by Shildan, Inc.