

- | | |
|---|--|
| 1. Metal Studs wall cavity | 9. Balcony structure |
| 2. Substrate | 10. Soffit panel (per arch specs.) |
| 3. Moisture barrier | 11. Mineral wool type insulation (thickness per spec.) |
| 4. Vertical support aluminum extrusion | 12. Backer rod and sealant |
| 5. Aluminum horizontal Z-girts (or double L angles) | 13. Formed aluminum closure |
| 6. ALPHATON® terra cotta panel | 14. Formed aluminum clip (as req.) |
| 7. Terra cotta panel middle aluminum clip | 15. Panels beyond |
| 7.1 Terra cotta panel top aluminum clip | 16. Pressure gasket |
| 8. Formed aluminum continuous continuous J-trim | 17. Stainless steel spring clip |

Version-4.0

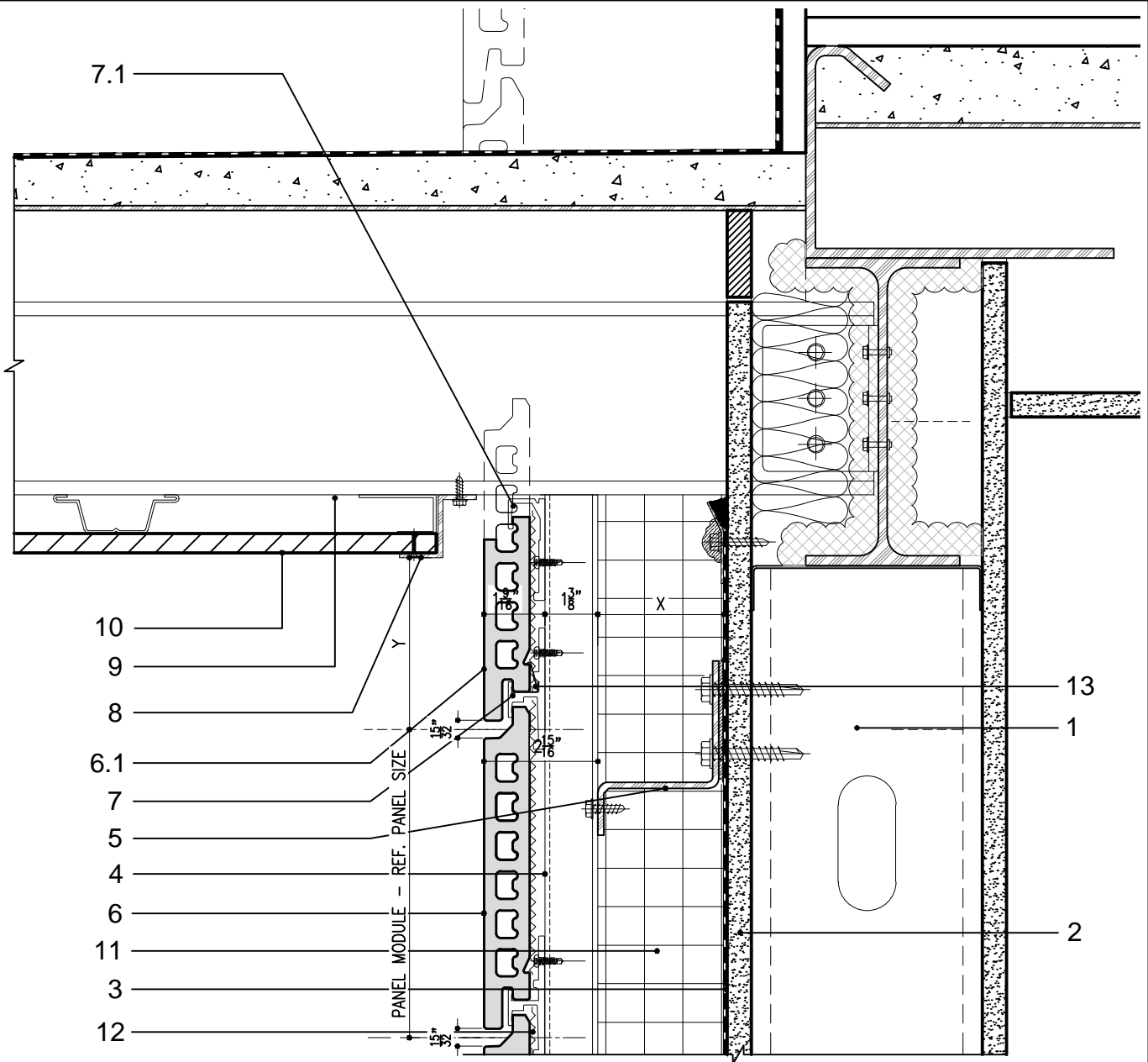
SYSTEM:	DETAIL No.	OPTION.
ALPHATON	M216	a

TERMINATION DETAIL @ SOFFIT (FULL PANEL)

Note: This is conceptual detail; project specific details must be reviewed with Shildan



Shildan, Inc.
2047 Briggs Road
Mount Laurel, NJ 08054
T: (215) 525-4510
F: (215) 525-4511
©2008 by Shildan, Inc.



- | | |
|---|--|
| 1. Metal Studs wall cavity | 8. Formed aluminum soffit termination z-clip |
| 2. Substrate | 9. Balcony structure |
| 3. Moisture barrier | 10. Soffit panel (per arch specs.) |
| 4. Vertical support aluminum extrusion | 11. Mineral wool type insulation (thickness per spec.) |
| 5. Aluminum horizontal Z-girts (or double L angles) | 12. Pressure gasket |
| 6. ALPHATON® terra cotta panel | 13. Stainless steel spring clip |
| 6.1 ALPHATON® terra cotta panel cut to size | |
| 7. Terra cotta panel middle aluminum clip | |
| 7.1 Terra cotta panel top aluminum clip | |

Version-4.0

SYSTEM:	DETAIL No.	OPTION.
ALPHATON	M216	b

**TERMINATION DETAIL
@ SOFFIT (CUT PANEL)**

Note: This is conceptual detail; project specific details must be reviewed with Shildan



Shildan, Inc.
 2047 Briggs Road
 Mount Laurel, NJ 08054
 T: (215) 525-4510
 F: (215) 525-4511
 ©2008 by Shildan, Inc.