

- |  |   |
|--|---|
| <ol style="list-style-type: none"> <li>1. Metal Studs wall cavity</li> <li>2. Substrate</li> <li>3. Waterproofing membrane</li> <li>4. Horizontal substructure aluminum extrusion</li> <li>5. ALPHATON GEN.06-150 ® terra cotta panel</li> <li>6. Terra cotta fastening middle aluminum clip</li> <li>7. Terra cotta fastening top aluminum clip</li> <li>8. Anchor clip</li> <li>9. Blocking</li> <li>10. Aluminum snap-on coping cap</li> <li>11. Formed aluminum non-continuous support</li> <li>12. Cleat</li> </ol> | <ol style="list-style-type: none"> <li>13. Continuous aluminum angle (32" or 48" o.c. for stud wall and 60" for CMU wall typ. pending design requirements &amp; engineering)</li> <li>14. Non-continuous alum. angle bracket (8" long)</li> </ol> |
|--|---|

Version-8

SYSTEM:  
ALPHATON

DETAIL No.

OPTION.

**Gen. 06 14 a**

**COPING DETAIL  
W/ ALUMINUM CAP**

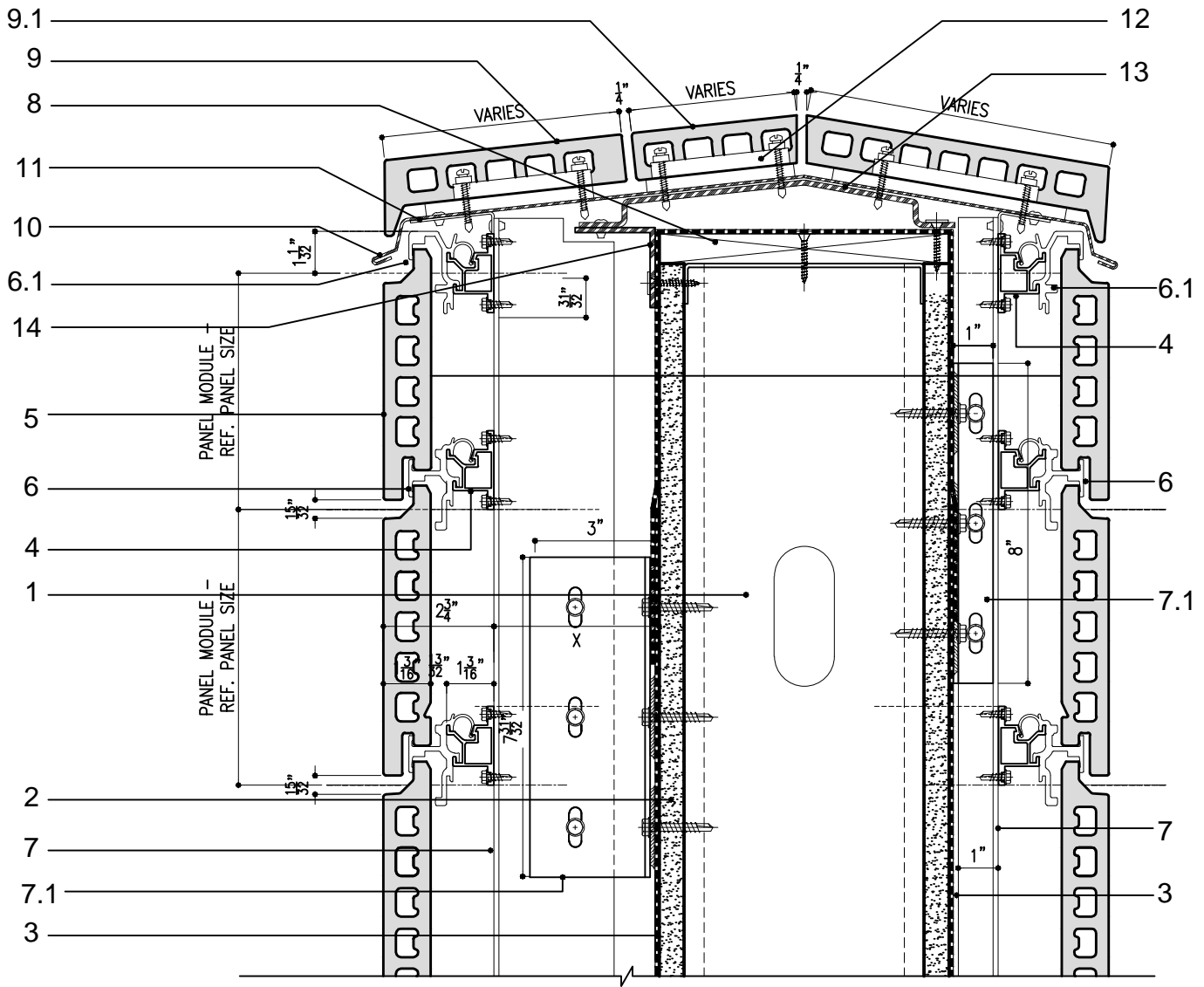
Note: This is conceptual detail; project specific details must be reviewed with Shildan



**Shildan, Inc.**

2047 Briggs Road  
Mount Laurel, NJ 08054  
T: (215) 525-4510  
F: (215) 525-4511

©2008 by Shildan, Inc.



- |  |   |
|--|---|
| 1. Metal Studs wall cavity   | 8. Blocking   |
| 2. Substrate   | 9. Terra cotta sill                                   |
| 3. Waterproofing membrane  | 9.1. Terra cotta sill cut to size                     |
| 4. Horizontal substructure aluminum extrusion  | 10. Formed aluminum flashing/support profile for T.C. |
| 5. ALPHATON GEN.06-150 ® terra cotta panel   | 11. Formed aluminum stiffening clips                  |
| 6. Terra cotta fastening middle aluminum clip  | 12. Pressure attachment clip assembly                 |
| 6.1 Terra cotta fastening top aluminum clip  | 13. Bent aluminum profile                             |
| 7. Continuous aluminum angle (32" or 48" o.c. for stud wall and 60" for CMU wall typ. pending design requirements & engineering) | 14. Aluminum angle                                    |
| 7.1 Non-continuous alum. angle bracket (8" long)   |   |

Version-8

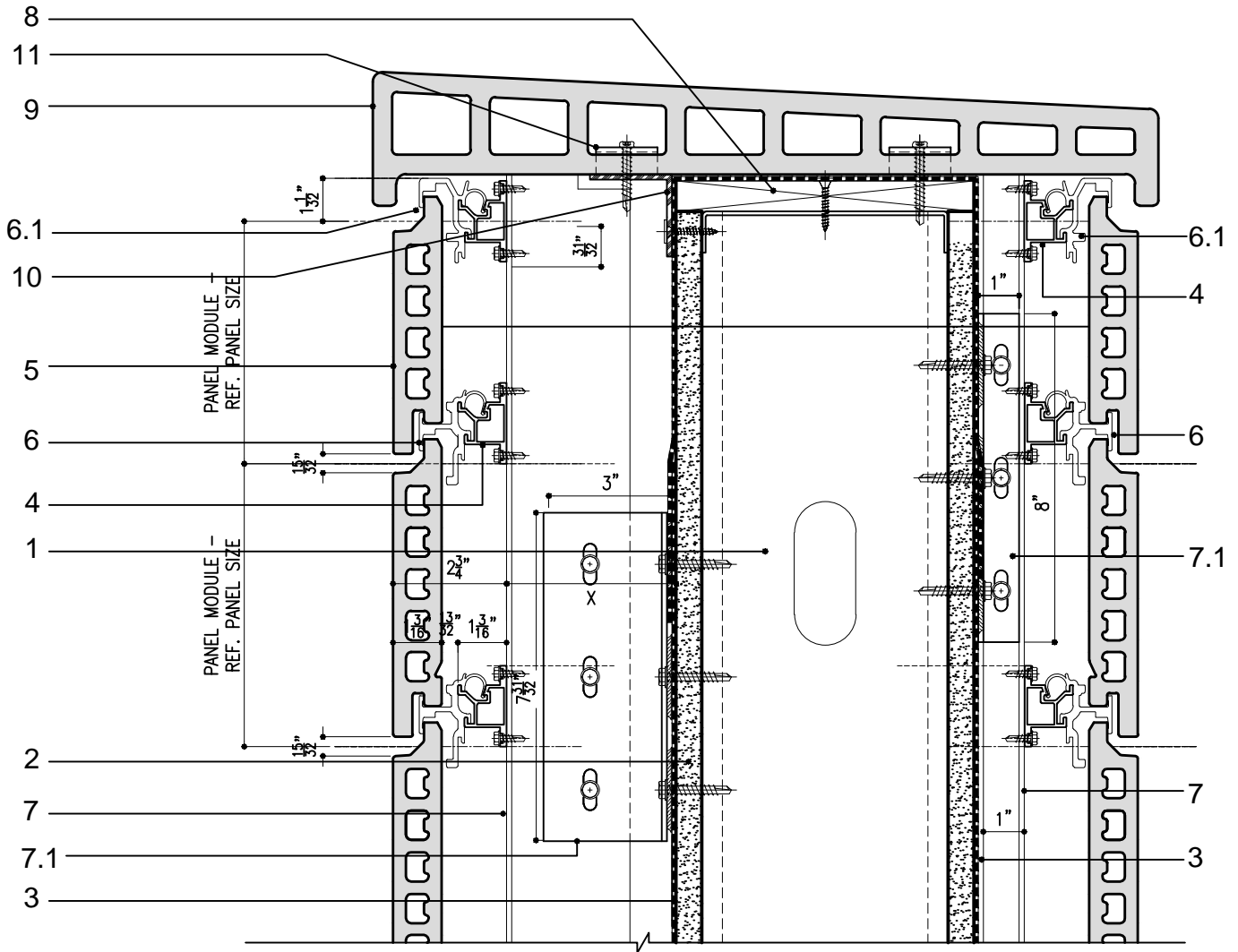
SYSTEM: ALPHATON	DETAIL No.	OPTION.
<b>Gen. 06</b>	<b>14</b>	<b>b</b>

**COPING DETAIL  
W/ T.C. SILL PANELS**

Note: This is conceptual detail; project specific details must be reviewed with Shildan



**Shildan, Inc.**  
 2047 Briggs Road  
 Mount Laurel, NJ 08054  
 T: (215) 525-4510  
 F: (215) 525-4511  
 ©2008 by Shildan, Inc.



- |  |  |
|--|--|
| <ul style="list-style-type: none"> <li>1. Metal Studs wall cavity</li> <li>2. Substrate</li> <li>3. Waterproofing membrane</li> <li>4. Horizontal substructure aluminum extrusion</li> <li>5. ALPHATON GEN.06-150 ® terra cotta panel</li> <li>6. Terra cotta fastening middle aluminum clip</li> <li>6.1 Terra cotta fastening top aluminum clip</li> <li>7. Continuous aluminum angle (32" or 48" o.c. for stud wall and 60" for CMU wall typ. pending design requirements &amp; engineering)</li> <li>7.1 Non-continuous alum. angle bracket (8" long)</li> </ul> | <ul style="list-style-type: none"> <li>8. Blocking</li> <li>9. Terra cotta Coping</li> <li>10. Aluminum angle</li> <li>10. Formed aluminum flashing/support profile for T.C.</li> <li>11. Aluminum "Claw" clips</li> </ul> |
|--|--|

Version-8

SYSTEM:  
ALPHATON

DETAIL No.

OPTION.

**Gen. 06 14 c**

**PARAPET DETAIL  
W/ T.C. COPING**

Note: This is conceptual detail; project specific details must be reviewed with Shildan



**Shildan, Inc.**

2047 Briggs Road  
Mount Laurel, NJ 08054  
T: (215) 525-4510  
F: (215) 525-4511

©2008 by Shildan, Inc.