

- 1. Metal stud
- 2. Substrate
- 3. Waterproofing membrane
- 4. Mineral wool type insulation (thickness per spec.)
- 5. Horizontal substructure aluminum extrusion
- 6. ALPHATON GEN.06-150 ® terra cotta panel
- 7. Terra cotta fastening middle aluminum clip
- 7.1 Terra cotta fastening bottom aluminum clip
- 8. Window structural support
- 9. Double backer rod & sealant and blocking
- 10. Formed aluminum cont. clip angle
- 11. Continuous aluminum angle (32" or 48" o.c. for stud wall and 60" for CMU wall typ. pending design requirements & engineering)
- 12. Non-continuous alum. angle bracket (8" long)
- 13. Optional stainless steel flashing w/ water drip edge

Version-8

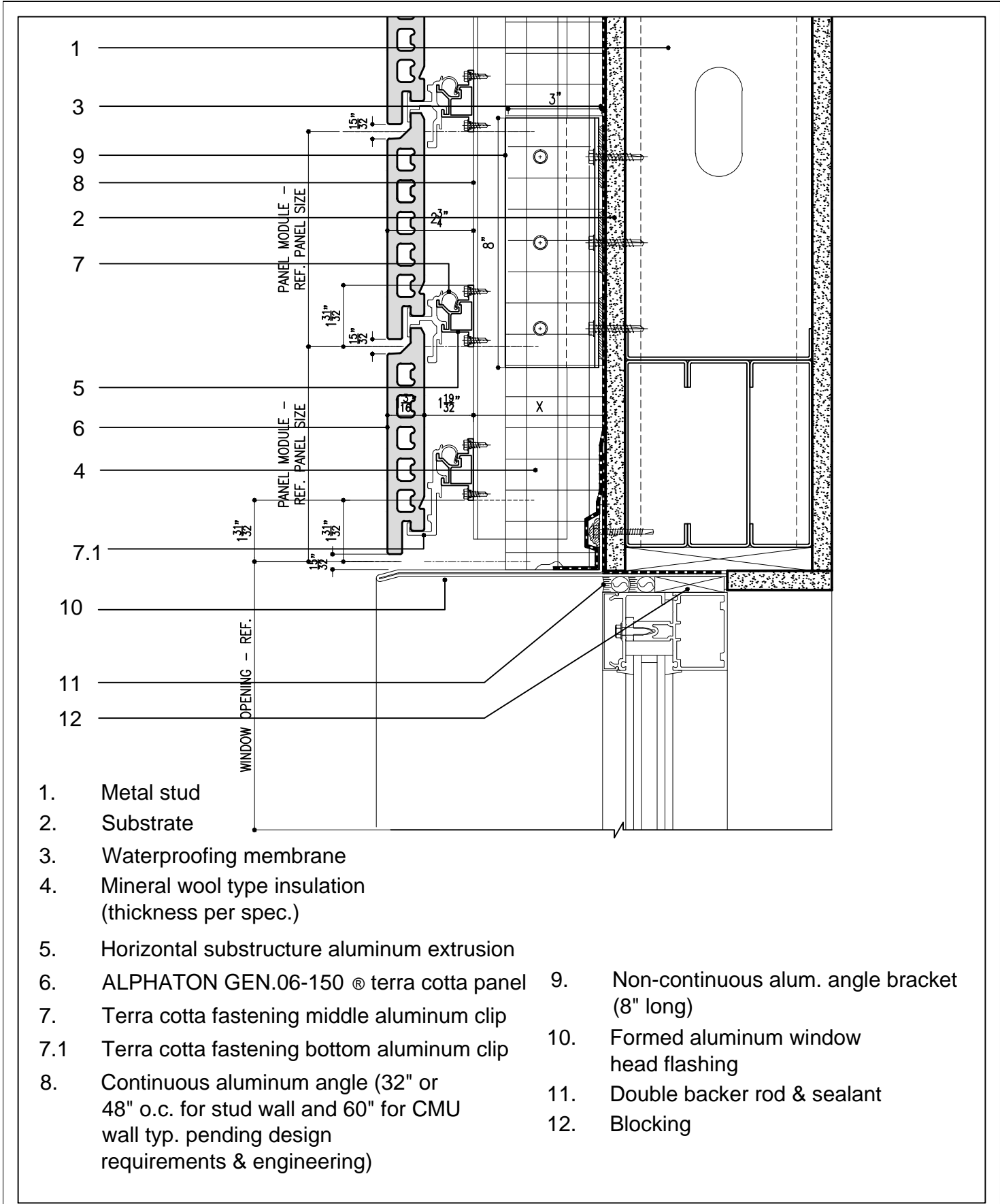
SYSTEM: ALPHATON	DETAIL No.	OPTION.
Gen. 06	13	a

**HEAD DETAIL
WITH FLASHING (WINDOW FLUSH
WITH PANELS)**

Note: This is conceptual detail; project specific details must be reviewed with Shildan



Shildan, Inc.
 2047 Briggs Road
 Mount Laurel, NJ 08054
 T: (215) 525-4510
 F: (215) 525-4511
 ©2008 by Shildan, Inc.



- 1. Metal stud
- 2. Substrate
- 3. Waterproofing membrane
- 4. Mineral wool type insulation (thickness per spec.)
- 5. Horizontal substructure aluminum extrusion
- 6. ALPHATON GEN.06-150 ® terra cotta panel
- 7. Terra cotta fastening middle aluminum clip
- 7.1 Terra cotta fastening bottom aluminum clip
- 8. Continuous aluminum angle (32" or 48" o.c. for stud wall and 60" for CMU wall typ. pending design requirements & engineering)
- 9. Non-continuous alum. angle bracket (8" long)
- 10. Formed aluminum window head flashing
- 11. Double backer rod & sealant
- 12. Blocking

Version-8

SYSTEM:
ALPHATON

DETAIL No.

OPTION.

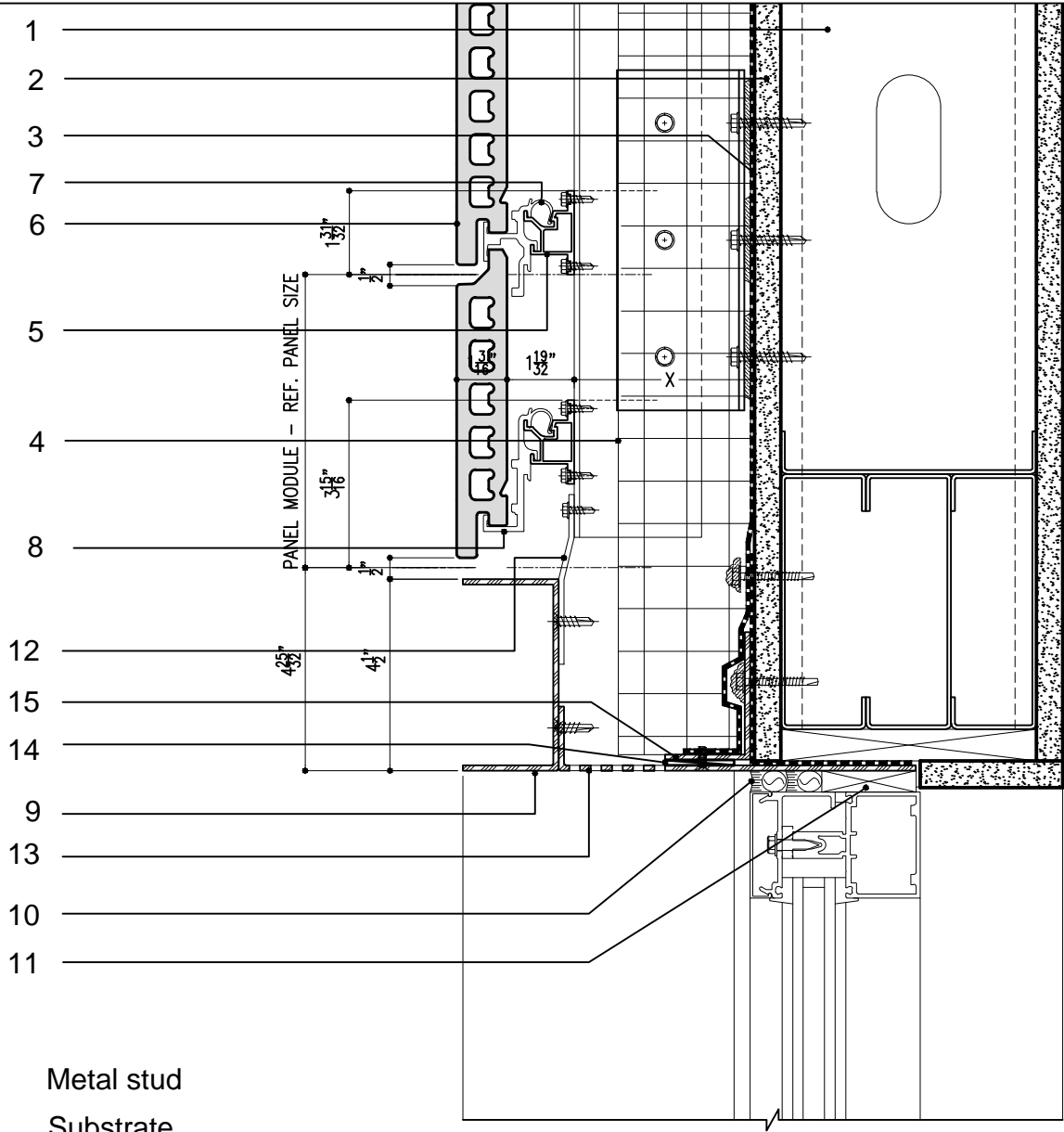
Gen. 06 13 b

**HEAD DETAIL
WITH FLASHING**

Note: This is conceptual detail; project specific details must be reviewed with Shildan



Shildan, Inc.
2047 Briggs Road
Mount Laurel, NJ 08054
T: (215) 525-4510
F: (215) 525-4511
©2008 by Shildan, Inc.



- | | |
|-------------------------------------------------------|-----------------------------------------------------------------------------------------------------------------------------------|
| 1. Metal stud | |
| 2. Substrate | |
| 3. Waterproofing membrane | |
| 4. Mineral wool type insulation (thickness per spec.) | |
| 5. Horizontal substructure aluminum extrusion | |
| 6. ALPHATON GEN.06-150 ® terra cotta panel | |
| 7. Terra cotta fastening middle aluminum clip | |
| 8. Terra cotta fastening bottom aluminum clip | |
| 9. Extruded aluminum reveal channel | |
| 10. Double backer rod & sealant | |
| 11. Blocking | |
| | 12. Non- cont. formed aluminum cleat |
| | 13. Perforated aluminum bottom closure plate |
| | 14. Nylon slip pad |
| | 15. Continuous aluminum angle (32" or 48" o.c. for stud wall and 60" for CMU wall typ. pending design requirements & engineering) |

Version-8

SYSTEM:
ALPHATON

DETAIL No.

OPTION.

Gen. 06 13 c

**HEAD DETAIL
WITH REVEAL**

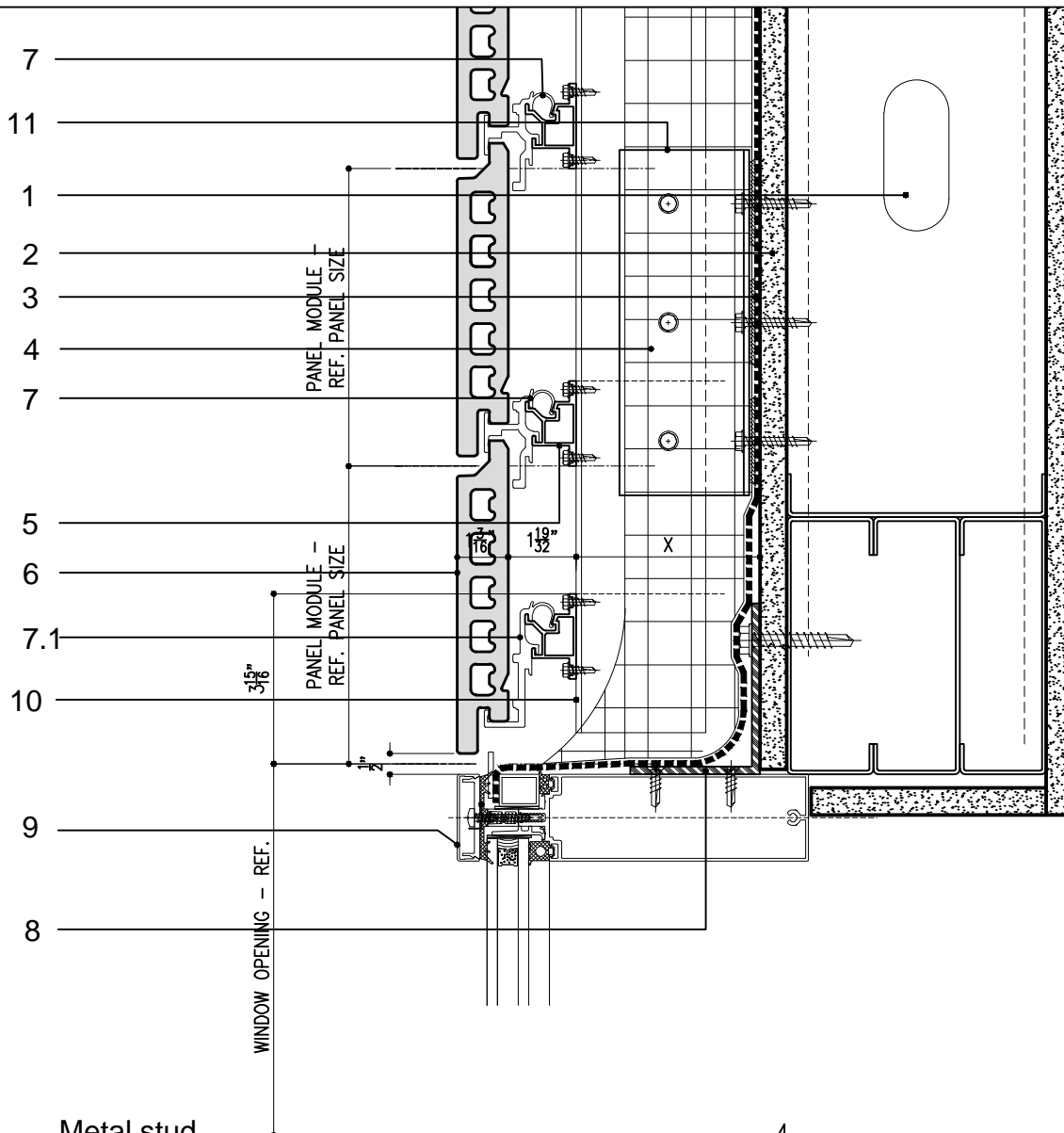
Note: This is conceptual detail; project specific details must be reviewed with Shildan



Shildan, Inc.

2047 Briggs Road
Mount Laurel, NJ 08054
T: (215) 525-4510
F: (215) 525-4511

©2008 by Shildan, Inc.



- 1. Metal stud
- 2. Substrate
- 3. Moisture barrier
- 4. Mineral wool type insulation (thickness per spec.)
- 5. Horizontal substructure aluminum extrusion
- 6. ALPHATON GEN.06-150 ® terra cotta panel
- 7. Terra cotta fastening middle aluminum clip
- 7.1 Terra cotta fastening bottom aluminum clip
- 8. Curtainwall structural support
- 9. Curtainwall horizontal aluminum profile
- 10. Continuous aluminum angle (32" or 48" o.c. for stud wall and 60" for CMU wall typ. pending design requirements & engineering)
- 11. Non-continuous alum. angle bracket (8" long)

Version-8

SYSTEM:
ALPHATON

DETAIL No.

OPTION.

Gen. 06 13 d

HEAD DETAIL
WITH CURTAINWALL CONDITION

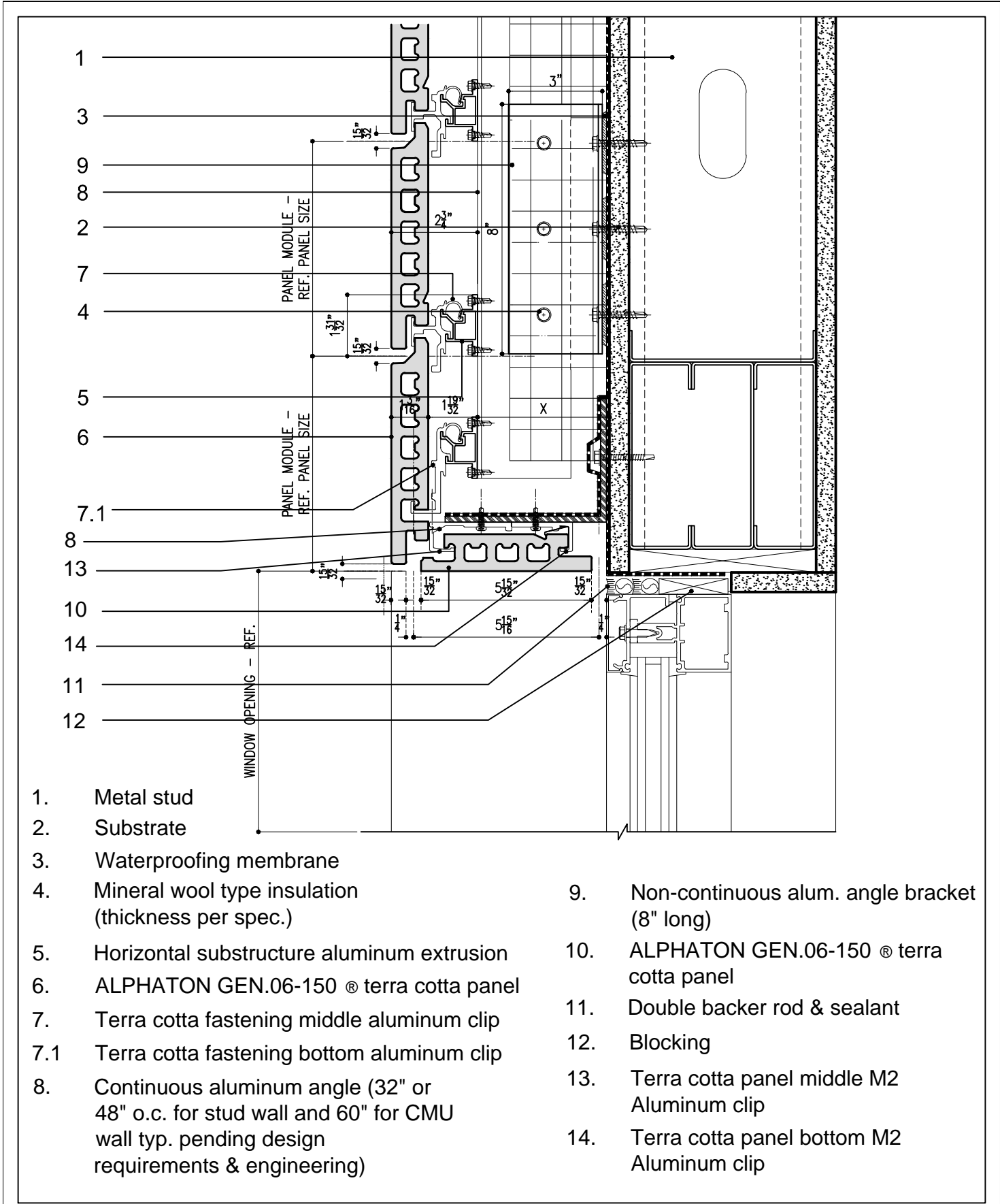
Note: This is conceptual detail; project specific details must be reviewed with Shildan



Shildan, Inc.

2047 Briggs Road
Mount Laurel, NJ 08054
T: (215) 525-4510
F: (215) 525-4511

©2008 by Shildan, Inc.



- | | |
|-------------------------------------------------------------------------------------------------------------------------------------------|----------------------------------------------------|
| 1. Metal stud | |
| 2. Substrate | |
| 3. Waterproofing membrane | |
| 4. Mineral wool type insulation
(thickness per spec.) | |
| 5. Horizontal substructure aluminum extrusion | |
| 6. ALPHATON GEN.06-150 ® terra cotta panel | |
| 7. Terra cotta fastening middle aluminum clip | |
| 7.1 Terra cotta fastening bottom aluminum clip | |
| 8. Continuous aluminum angle (32" or
48" o.c. for stud wall and 60" for CMU
wall typ. pending design
requirements & engineering) | |
| | 9. Non-continuous alum. angle bracket
(8" long) |
| | 10. ALPHATON GEN.06-150 ® terra
cotta panel |
| | 11. Double backer rod & sealant |
| | 12. Blocking |
| | 13. Terra cotta panel middle M2
Aluminum clip |
| | 14. Terra cotta panel bottom M2
Aluminum clip |

Version-8

SYSTEM: ALPHATON	DETAIL No.	OPTION.
Gen. 06	13	e

HEAD DETAIL
WITH TERRA COTTA
RETURN

Note: This is conceptual detail; project specific details must be reviewed with Shildan

Shildan, Inc.
2047 Briggs Road
Mount Laurel, NJ 08054
T: (215) 525-4510
F: (215) 525-4511
©2008 by Shildan, Inc.

SHILDAN
Terracotta Rainscreen