

- 1. Metal stud
- 2. Substrate
- 3. Waterproofing membrane
- 4. Mineral wool type insulation (thickness per spec.)
- 5. Horizontal substructure aluminum extrusion
- 6. ALPHATON GEN.06-150 ® terra cotta panel
- 7. Terra cotta fastening middle aluminum clip
- 7.1 Terra cotta fastening top aluminum clip
- 8. Window structural support
- 9. Formed aluminum flashing sill
- 10. Double backer rod & sealant and blocking
- 11. Continuous aluminum angle (32" or 48" o.c. for stud wall and 60" for CMU wall typ. pending design requirements & engineering)
- 12. Non-continuous alum. angle bracket (8" long)

Version-8

SYSTEM:
ALPHATON

DETAIL No.

OPTION.

Gen. 06 12 a

METAL
SILL DETAIL (WINDOW FLUSH
WITH PANELS)

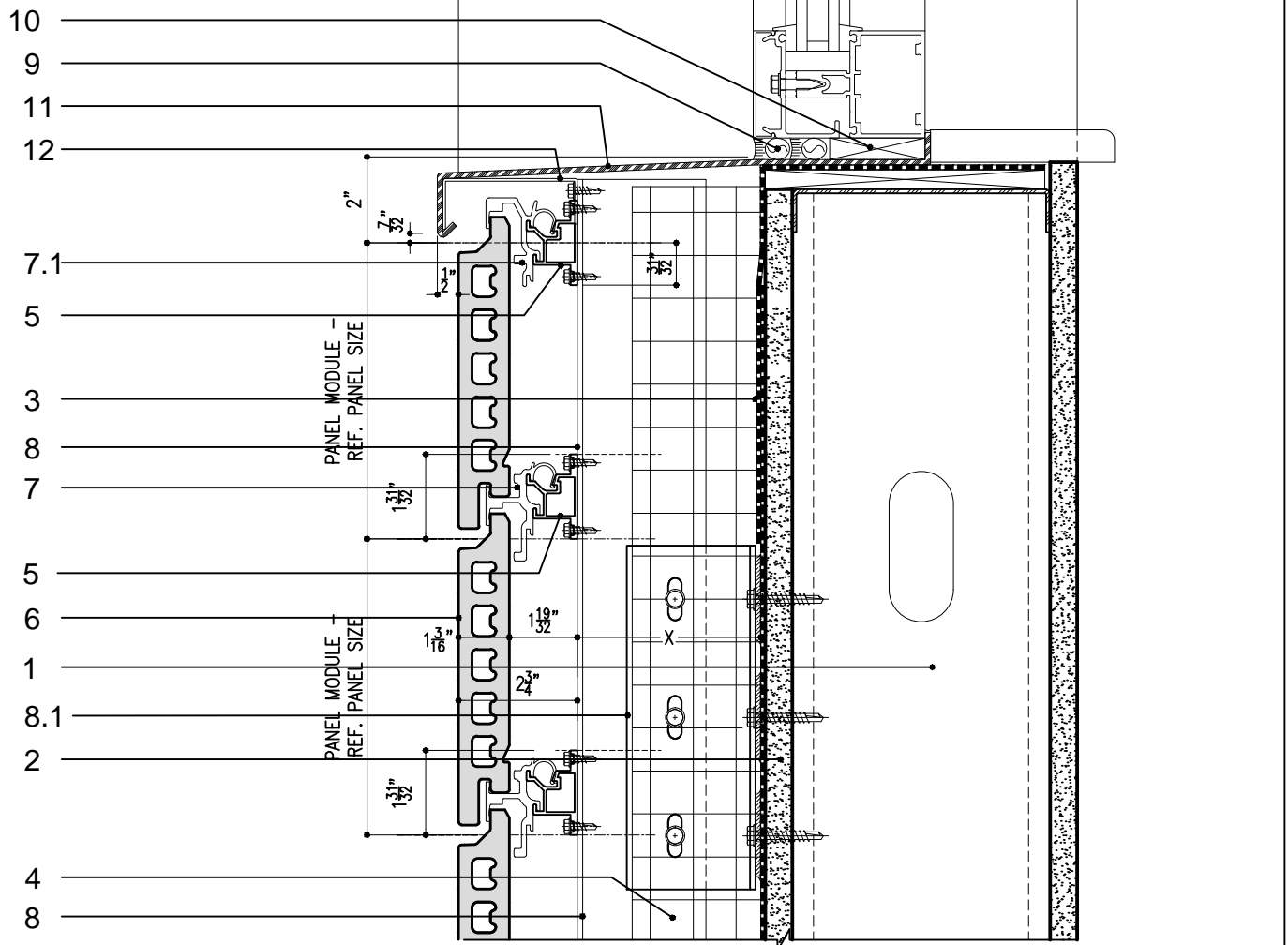
Note: This is conceptual detail; project specific details must be reviewed with Shildan



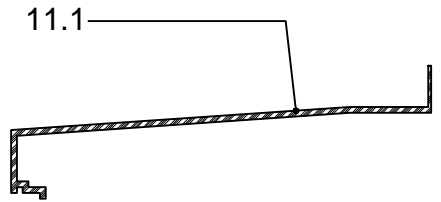
Shildan, Inc.

2047 Briggs Road
Mount Laurel, NJ 08054
T: (215) 525-4510
F: (215) 525-4511

©2008 by Shildan, Inc.



- | | |
|--|--|
| <ul style="list-style-type: none"> 1. Metal stud 2. Substrate 3. Waterproofing membrane 4. Mineral wool type insulation (thickness per spec.) 5. Horizontal substructure aluminum extrusion 6. ALPHATON GEN.06-150 ® terra cotta panel 7. Terra cotta fastening middle aluminum clip 7.1 Terra cotta fastening top aluminum clip 8. Continuous aluminum angle (32" or 48" o.c. for stud wall and 60" for CMU wall typ. pending design requirements & engineering) 8.1 Non-continuous alum. angle bracket (8" long) 9. Double backer rod & sealant | <ul style="list-style-type: none"> 10. Blocking 11. Formed aluminum sill 11.1. Alternative aluminum extruded sill 12. Formed aluminum non-cont. support clip |
|--|--|



Version-8

SYSTEM:
ALPHATON

DETAIL No.

OPTION.

Gen. 06 12 b

METAL SILL DETAIL

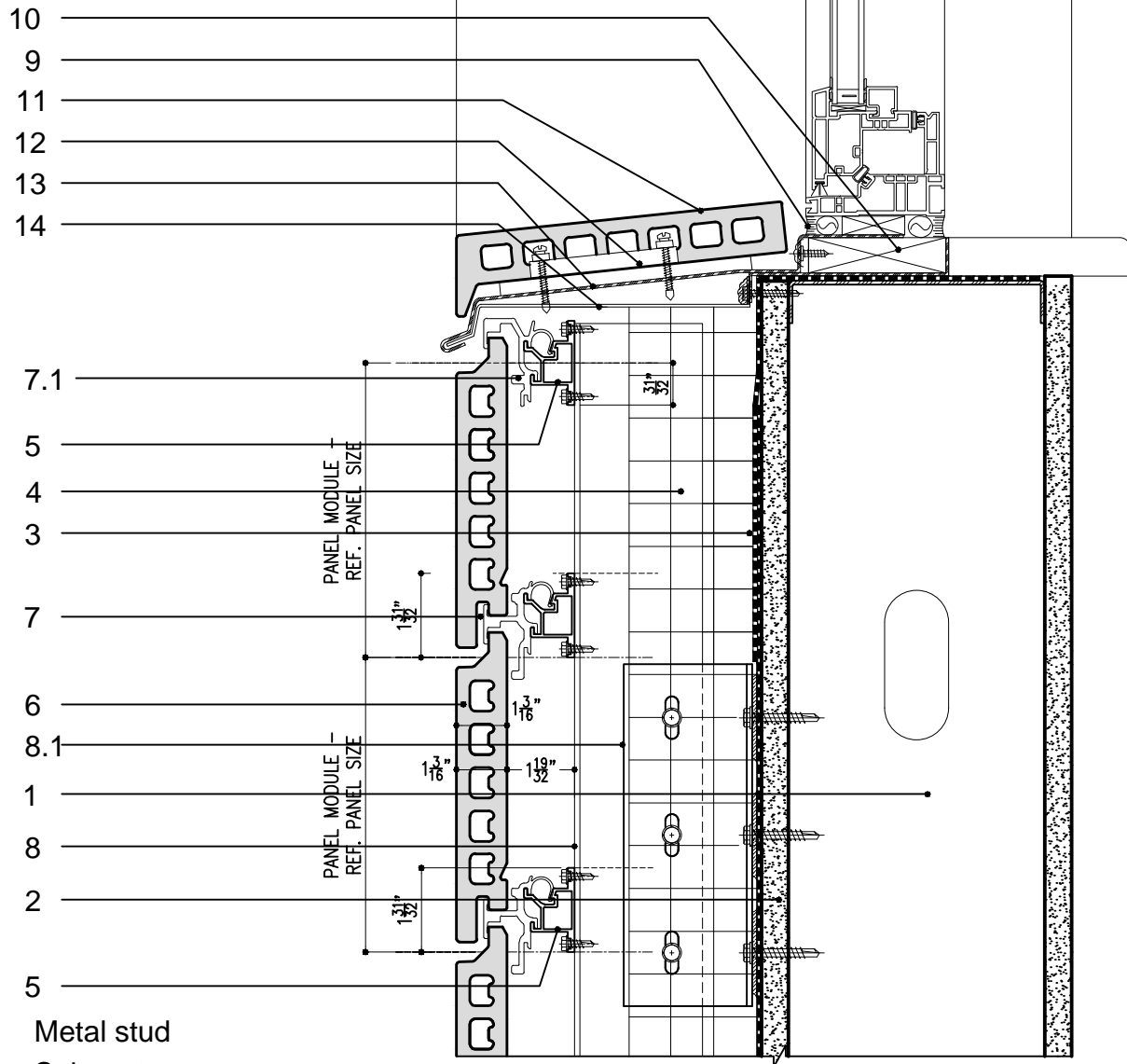
Note: This is conceptual detail; project specific details must be reviewed with Shildan



Shildan, Inc.

2047 Briggs Road
Mount Laurel, NJ 08054
T: (215) 525-4510
F: (215) 525-4511

©2008 by Shildan, Inc.



- | | | | |
|-----|---|-----|-----------------------------------|
| 1. | Metal stud | 9. | Sealant & backer rod |
| 2. | Substrate | 10. | Blocking |
| 3. | Waterproofing membrane | 11. | Terra cotta sill |
| 4. | Mineral wool type insulation (thickness per spec.) | 12. | Pressure attachment clip. |
| 5. | Horizontal substructure aluminum extrusion | 13. | Formed aluminum flashing sill |
| 6. | ALPHATON GEN.06-150 ® terra cotta panel | 14. | Formed aluminum clips (non-cont.) |
| 7. | Terra cotta fastening middle aluminum clip | | |
| 7.1 | Terra cotta fastening top aluminum clip | | |
| 8. | Continuous aluminum angle (32" or 48" o.c. for stud wall and 60" for CMU wall typ. pending design requirements & engineering) | | |
| 8.1 | Non-continuous alum. angle bracket (8" long) | | |

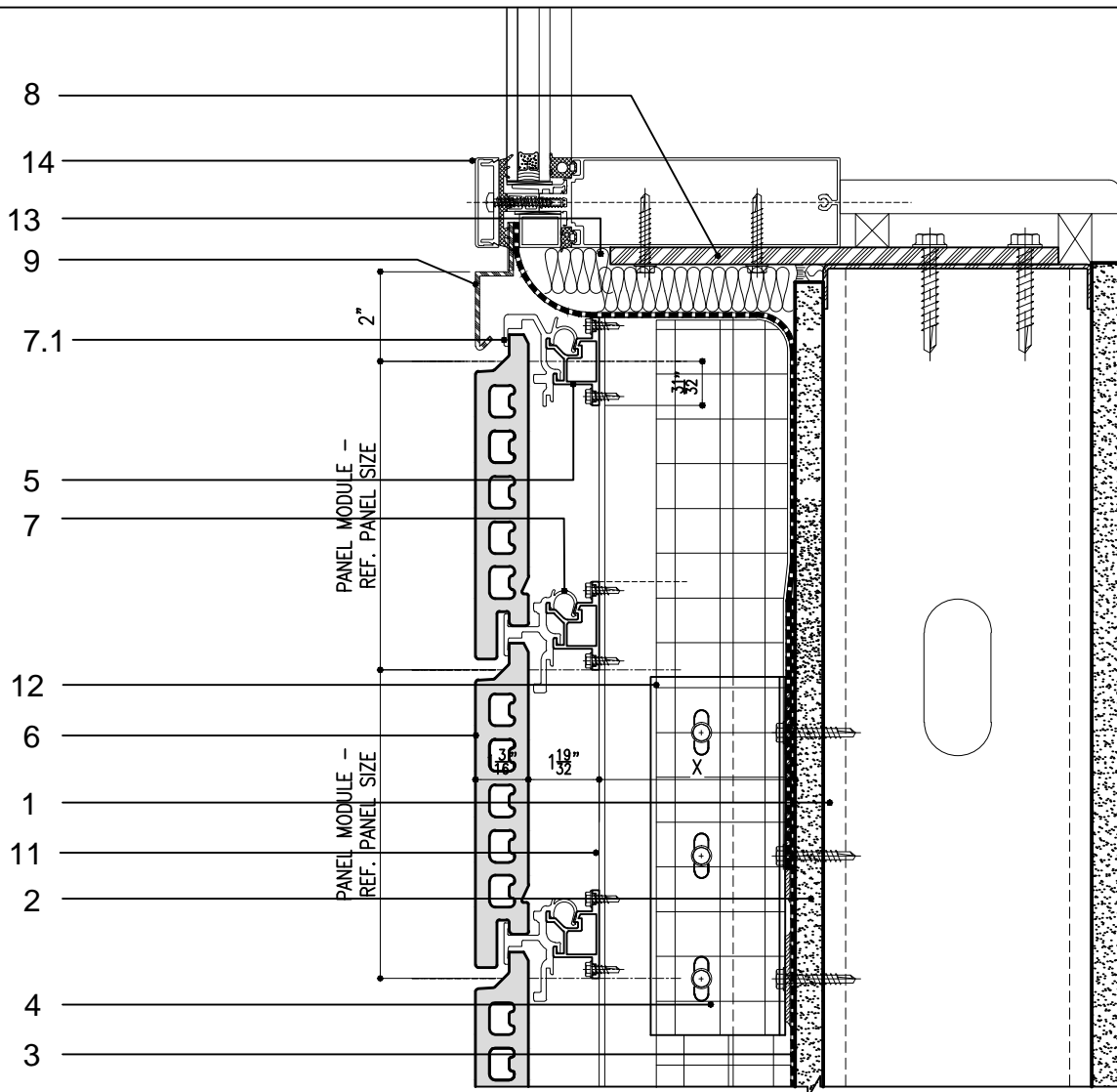
Version-8		
SYSTEM: ALPHATON	DETAIL No.	OPTION.
Gen. 06	12	c

**TERRACOTTA
SILL DETAIL**

Note: This is conceptual detail; project specific details must be reviewed with Shildan



Shildan, Inc.
 2047 Briggs Road
 Mount Laurel, NJ 08054
 T: (215) 525-4510
 F: (215) 525-4511
 ©2008 by Shildan, Inc.



- | | |
|---|---|
| <ul style="list-style-type: none"> 1. Metal stud 2. Substrate 3. Moisture barrier 4. Mineral wool type insulation (thickness per spec.) 5. Horizontal substructure aluminum extrusion 6. ALPHATON GEN.06-150 ® terra cotta panel 7. Terra cotta fastening middle aluminum clip 7.1 Terra cotta fastening top aluminum clip 8. Curtainwall structural support 9. Formed aluminum flashing sill (inserted into CW) 10. Backer rod & sealant and blocking | <ul style="list-style-type: none"> 11. Continuous aluminum angle (32" or 48" o.c. for stud wall and 60" for CMU wall typ. pending design requirements & engineering) 12. Non-continuous alum. angle bracket (8" long) 13. Insulation @ thermal bridge 14. Curtainwall horizontal aluminum profile |
|---|---|

Version-8

SYSTEM:
ALPHATON

DETAIL No.

OPTION.

SILL DETAIL WITH CURTAINWALL
CONDITION

Gen. 06 12 d

Note: This is conceptual detail; project specific details must be reviewed with Shildan



Shildan, Inc.

2047 Briggs Road
Mount Laurel, NJ 08054
T: (215) 525-4510
F: (215) 525-4511

©2008 by Shildan, Inc.