

- |   |   |
|---|---|
| 1. Metal Studs wall cavity                                  | 9. Flashing support clip  |
| 2. Substrate  | 10. Base cover per architectural specs.   |
| 3. Waterproofing membrane                                   | 11. Concrete curb   |
| 4. Horizontal substructure aluminum extrusion               | 12. Grade   |
| 5.1 Terra cotta fastening middle aluminum clip              | 13. Insulation at thermal bridges (per spec.)   |
| 5.2 Terra cotta fastening bottom aluminum clip              | 14. Continuous aluminum angle (32" or 48" o.c. for stud wall and 60" for CMU wall typ. pending design requirements & engineering) |
| 6. ALPHATON GEN.06-150 ® terra cotta panel                  | 15. Non-continuous alum. angle bracket (8" long)  |
| 7. Mineral wool type insulation (thickness per spec.)       |   |
| 8. Aluminum or stainless steel flashing set on a mastic bed |   |

Version-8

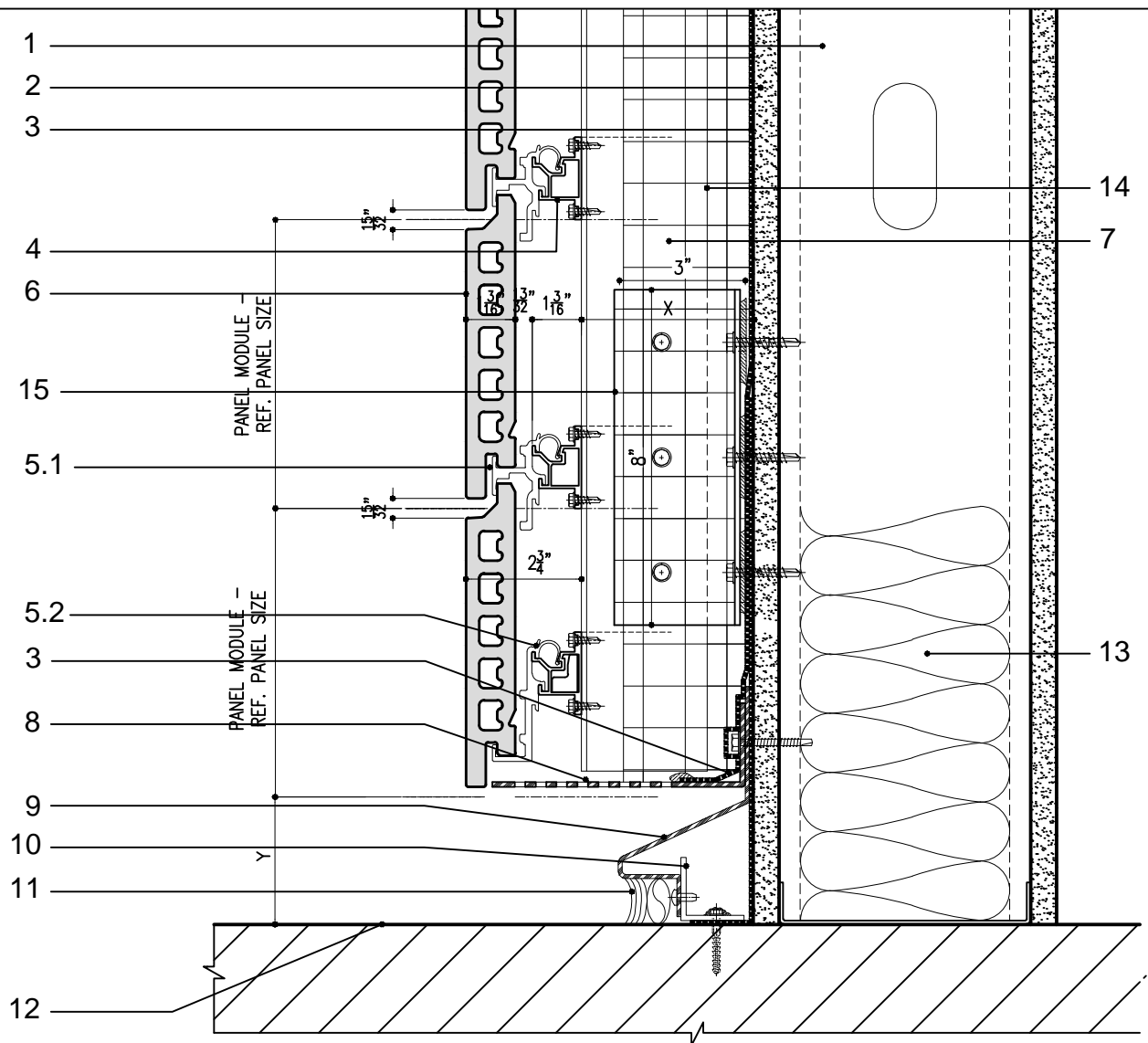
SYSTEM: ALPHATON	DETAIL No.	OPTION.
<b>Gen. 06</b>	<b>11</b>	<b>a</b>

TERMINATION DETAIL AT GRADE. FLUSH W/ BASE

Note: This is conceptual detail; project specific details must be reviewed with Shildan



**Shildan, Inc.**  
 2047 Briggs Road  
 Mount Laurel, NJ 08054  
 T: (215) 525-4510  
 F: (215) 525-4511  
 ©2008 by Shildan, Inc.



- |   |   |
|---|---|
| 1. Metal Studs wall cavity                            | 10. Aluminum angle  |
| 2. Substrate  | 11. Backer rod and sealant  |
| 3. Waterproofing membrane                             | 12. Floor   |
| 4. Horizontal substructure aluminum extrusion         | 13. Insulation at thermal bridges (per spec.)   |
| 5.1 Terra cotta fastening middle aluminum clip        | 14. Continuous aluminum angle (32" or 48" o.c. for stud wall and 60" for CMU wall typ. pending design requirements & engineering) |
| 5.2 Terra cotta fastening bottom aluminum clip        | 15. Non-continuous alum. angle bracket (8" long)  |
| 6. ALPHATON GEN.06-150 ® terra cotta panel            |   |
| 7. Mineral wool type insulation (thickness per spec.) |   |
| 8. Aluminum perforated formed closure                 |   |
| 9. Formed aluminum or stainless steel flashing        |   |

Version-8

SYSTEM: ALPHATON	DETAIL No. <b>11</b>	OPTION. <b>b</b>
---------------------	-------------------------	---------------------

TERMINATION DETAIL AT GRADE. FLOATING.

Note: This is conceptual detail; project specific details must be reviewed with Shildan



**Shildan, Inc.**  
 2047 Briggs Road  
 Mount Laurel, NJ 08054  
 T: (215) 525-4510  
 F: (215) 525-4511  
 ©2008 by Shildan, Inc.