

Version-8

SYSTEM:  
ALPHATON

DETAIL No.

OPTION.

Gen. 06

6

a

WALL TERMINATION  
DETAIL WITH TRIM

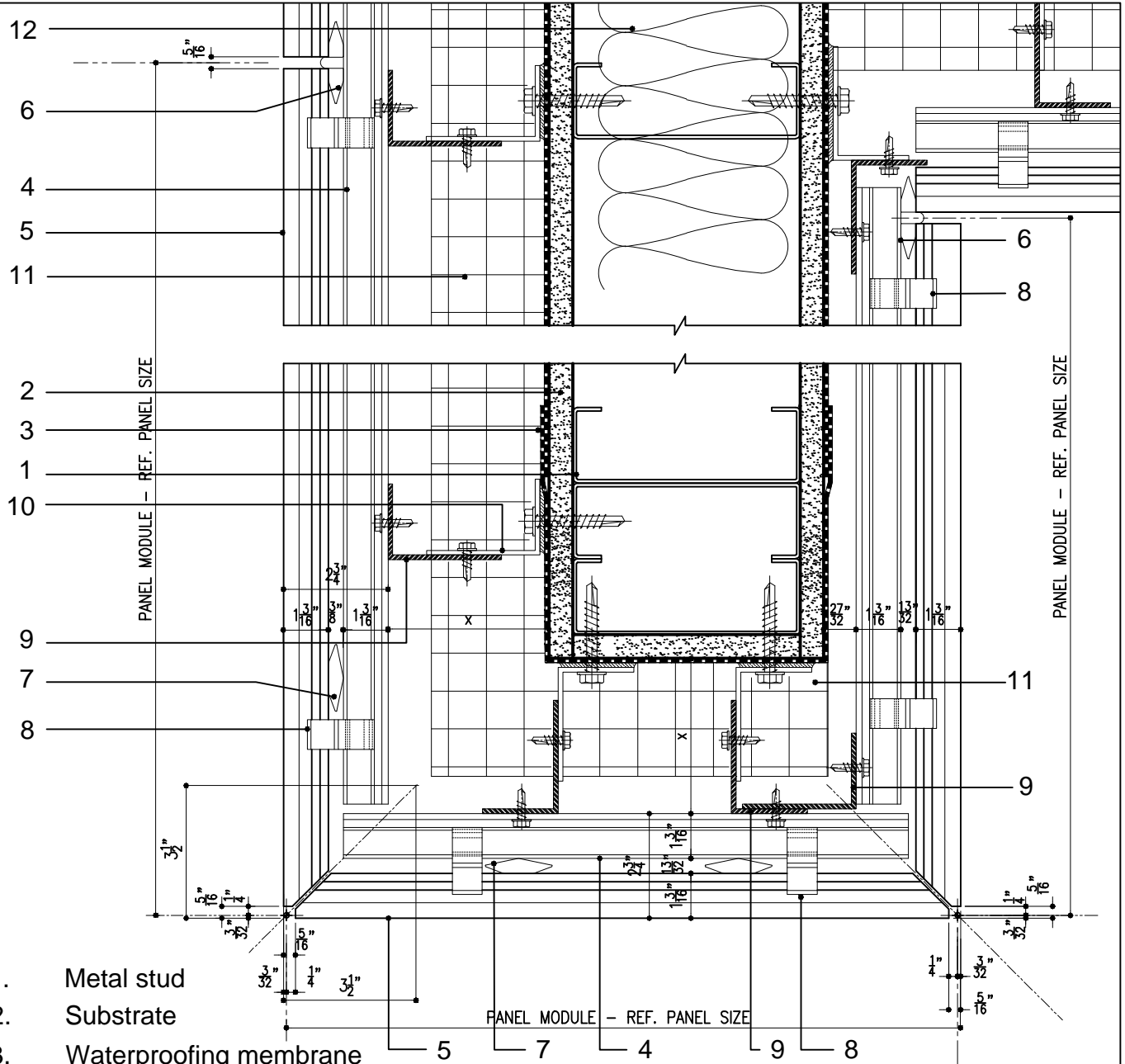
Note: This is conceptual detail; project specific details must be reviewed with Shildan



Shildan, Inc.

2047 Briggs Road  
Mount Laurel, NJ 08054  
T: (215) 525-4510  
F: (215) 525-4511

©2008 by Shildan, Inc.



1. Metal stud
2. Substrate
3. Waterproofing membrane
4. Horizontal substructure aluminum extrusion
5. ALPHATON GEN.06-150 © terra cotta panel
6. Spacer type "B"
7. Spacer type "A"
8. Terra cotta fastening aluminum clip
9. Continuous aluminum angle (32" or 48" o.c. for stud wall and 60" for CMU wall typ. pending design requirements & engineering)
10. Non-continuous alum. angle bracket (8" long)
11. Mineral wool type insulation (thickness per spec.)
12. Insulation at thermal bridges (per spec.)

Version-8

SYSTEM:  
ALPHATON

DETAIL No.

OPTION.

**Gen. 06**

**6**

**b**

**WALL TERMINATION  
DETAIL WITH MITER**

Note: This is conceptual detail; project specific details must be reviewed with Shildan



**Shildan, Inc.**

2047 Briggs Road  
Mount Laurel, NJ 08054  
T: (215) 525-4510  
F: (215) 525-4511

©2008 by Shildan, Inc.

SHILDAN  
Terracotta Rainscreen