

- 1. Metal studs
- 2. Substrate
- 3. Waterproofing membrane
- 4. Mineral wool type insulation (thickness per spec.)
- 5. Horizontal substructure aluminum extrusion
- 6. ALPHATON GEN.06-150 ® terra cotta panel
- 7. Spacer type "B"
- 7.1. Spacer type "C"
- 8. Continuous aluminum angle (32" or 48" o.c. for stud wall and 60" for CMU wall typ. pending design requirements & engineering)
- 9. Non-continuous alum. angle bracket (8" long)
- 10. Terra cotta fastening aluminum clip
- 11. Blocking
- 12. Double backer rod & sealant
- 13. Window / Door

(X). Per architect design

Version-8

SYSTEM:  
ALPHATON

DETAIL No.

OPTION.

Gen. 06

5

a

JAMB DETAIL

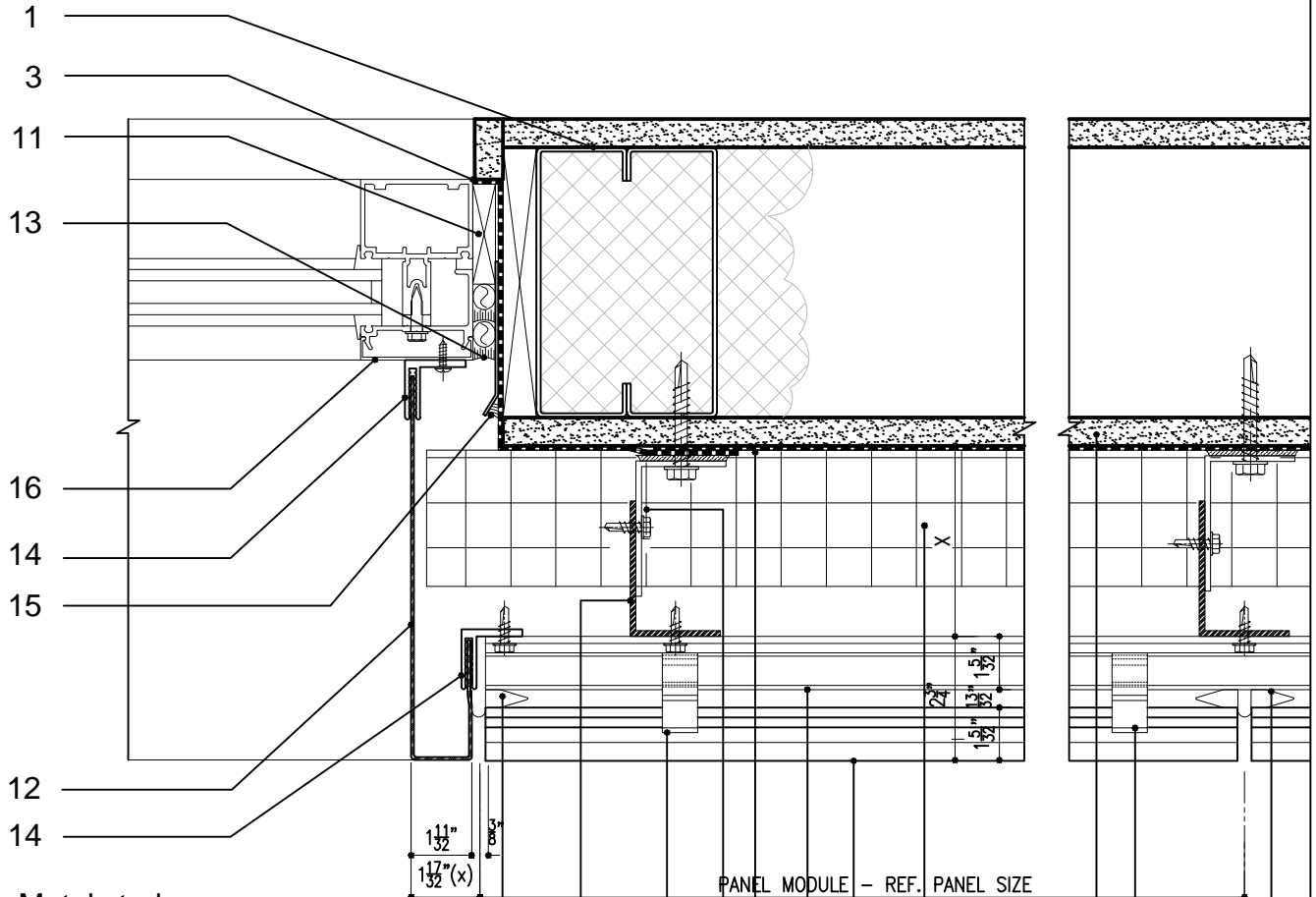
Note: This is conceptual detail; project specific details must be reviewed with Shildan



**Shildan, Inc.**

2047 Briggs Road  
Mount Laurel, NJ 08054  
T: (215) 525-4510  
F: (215) 525-4511

©2008 by Shildan, Inc.



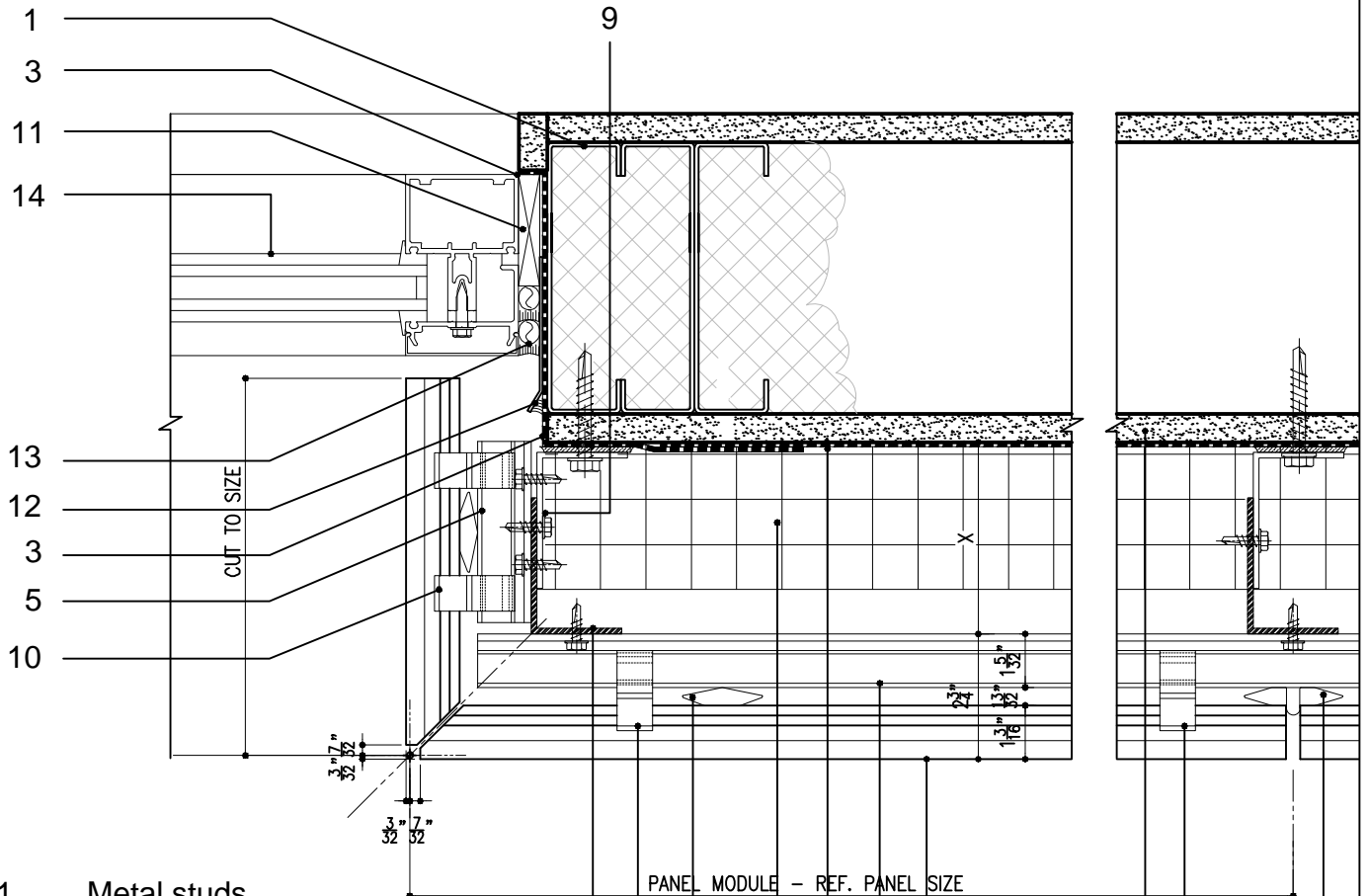
- |   |   |
|---|---|
| <ul style="list-style-type: none"> <li>1. Metal studs</li> <li>2. Substrate</li> <li>3. Waterproofing membrane</li> <li>4. Mineral wool type insulation (thickness per spec.)</li> <li>5. Horizontal substructure aluminum extrusion</li> <li>6. ALPHATON GEN.06-150 ® terra cotta panel</li> <li>7. Spacer type "B"</li> <li>7.1. Spacer type "C"</li> <li>8. Continuous aluminum angle (32" or 48" o.c. for stud wall and 60" for CMU wall typ. pending design requirements &amp; engineering)</li> <li>9. Non-continuous alum. angle bracket (8" long)</li> <li>10. Terra cotta fastening aluminum clip</li> <li>11. Blocking</li> <li>12. Formed aluminum closure</li> <li>13. Double backer rod &amp; sealant</li> </ul> | <ul style="list-style-type: none"> <li>14. F-shaped flashing receiver</li> <li>15. Formed aluminum flashing trim w/ sealant</li> <li>16. Window / Door</li> </ul> |
|---|---|
- (X). Per architect design

Version-8		
SYSTEM: ALPHATON	DETAIL No.	OPTION.
<b>Gen. 06</b>	<b>5</b>	<b>b</b>

### JAMB DETAIL

Note: This is conceptual detail; project specific details must be reviewed with Shildan

**Shildan, Inc.**  
 2047 Briggs Road  
 Mount Laurel, NJ 08054  
 T: (215) 525-4510  
 F: (215) 525-4511  
 ©2008 by Shildan, Inc.



- 1. Metal studs
- 2. Substrate
- 3. Waterproofing membrane
- 4. Mineral wool type insulation (thickness per spec.)
- 5. Horizontal substructure aluminum extrusion
- 6. ALPHATON GEN.06-150 ® terra cotta panel
- 7. Spacer type "B"
- 7.1. Spacer type "A"
- 8. Continuous aluminum angle (32" or 48" o.c. for stud wall and 60" for CMU wall typ. pending design requirements & engineering)
- 9. Non-continuous alum. angle bracket (8" long)
- 10. Terra cotta fastening aluminum clip
- 11. Blocking
- 12. Formed aluminum flashing trim w/ sealant
- 13. Double backer rod & sealant
- 14. Window / Door

Version-8

SYSTEM:  
ALPHATON

DETAIL No.

OPTION.

**Gen. 06**

**5**

**c**

**JAMB DETAIL  
PANEL RETURN**

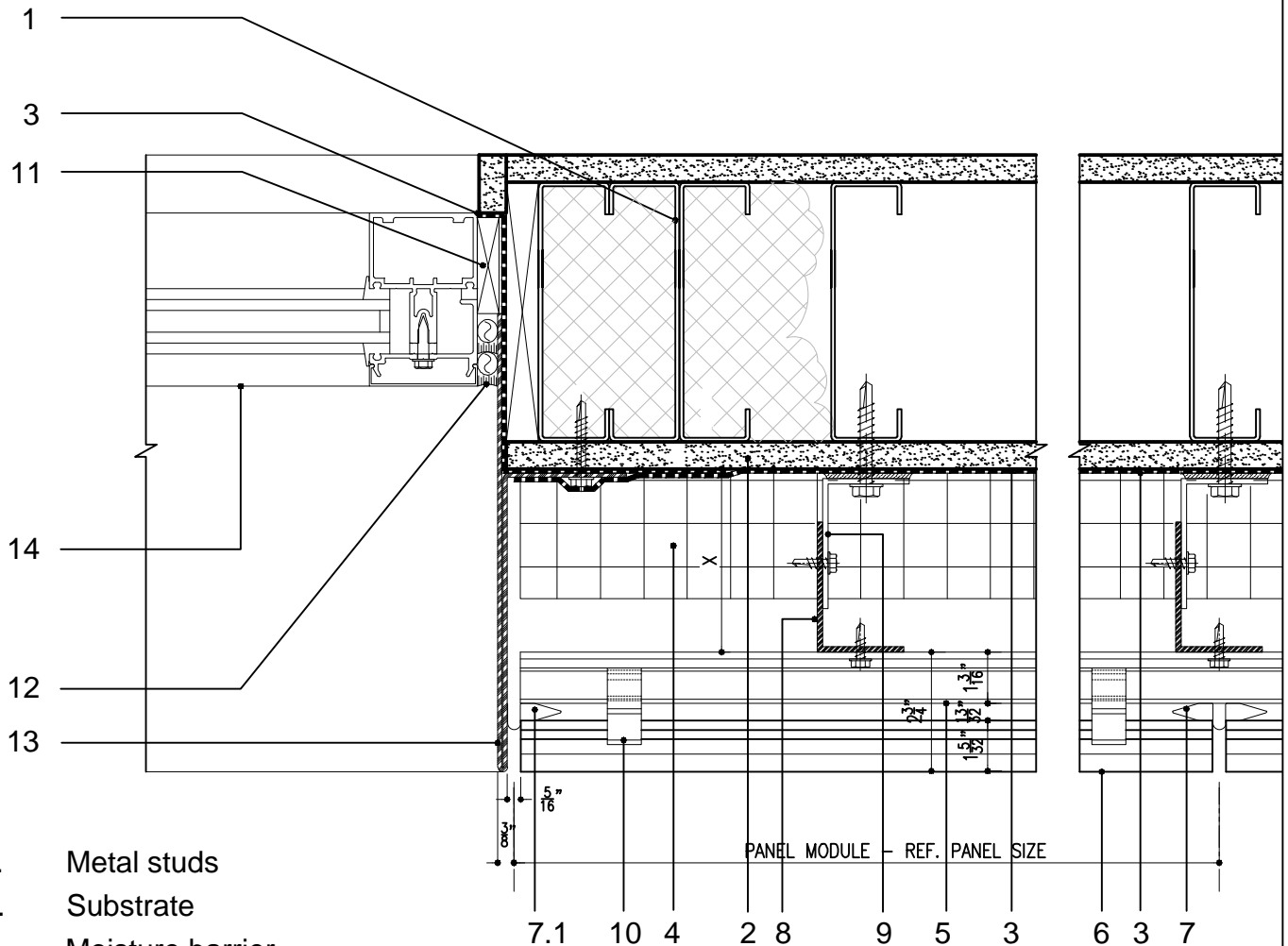
Note: This is conceptual detail; project specific details must be reviewed with Shildan



**Shildan, Inc.**

2047 Briggs Road  
Mount Laurel, NJ 08054  
T: (215) 525-4510  
F: (215) 525-4511

©2008 by Shildan, Inc.



- 1. Metal studs
- 2. Substrate
- 3. Moisture barrier
- 4. Mineral wool type insulation (thickness per spec.)
- 5. Horizontal substructure aluminum extrusion
- 6. ALPHATON GEN.06-150 ® terra cotta panel
- 7. Spacer type "B"
- 7.1. Spacer type "C"
- 8. Continuous aluminum angle (32" or 48" o.c. for stud wall and 60" for CMU wall typ. pending design requirements & engineering)
- 9. Non-continuous alum. angle bracket (8" long)
- 10. Terra cotta fastening aluminum clip
- 11. Blocking
- 12. Double backer rod & sealant
- 13. Formed aluminum closure
- 14. Window / Door

Version-8

SYSTEM:  
ALPHATON

DETAIL No.

OPTION.

**Gen. 06**

**5**

**d**

JAMB DETAIL

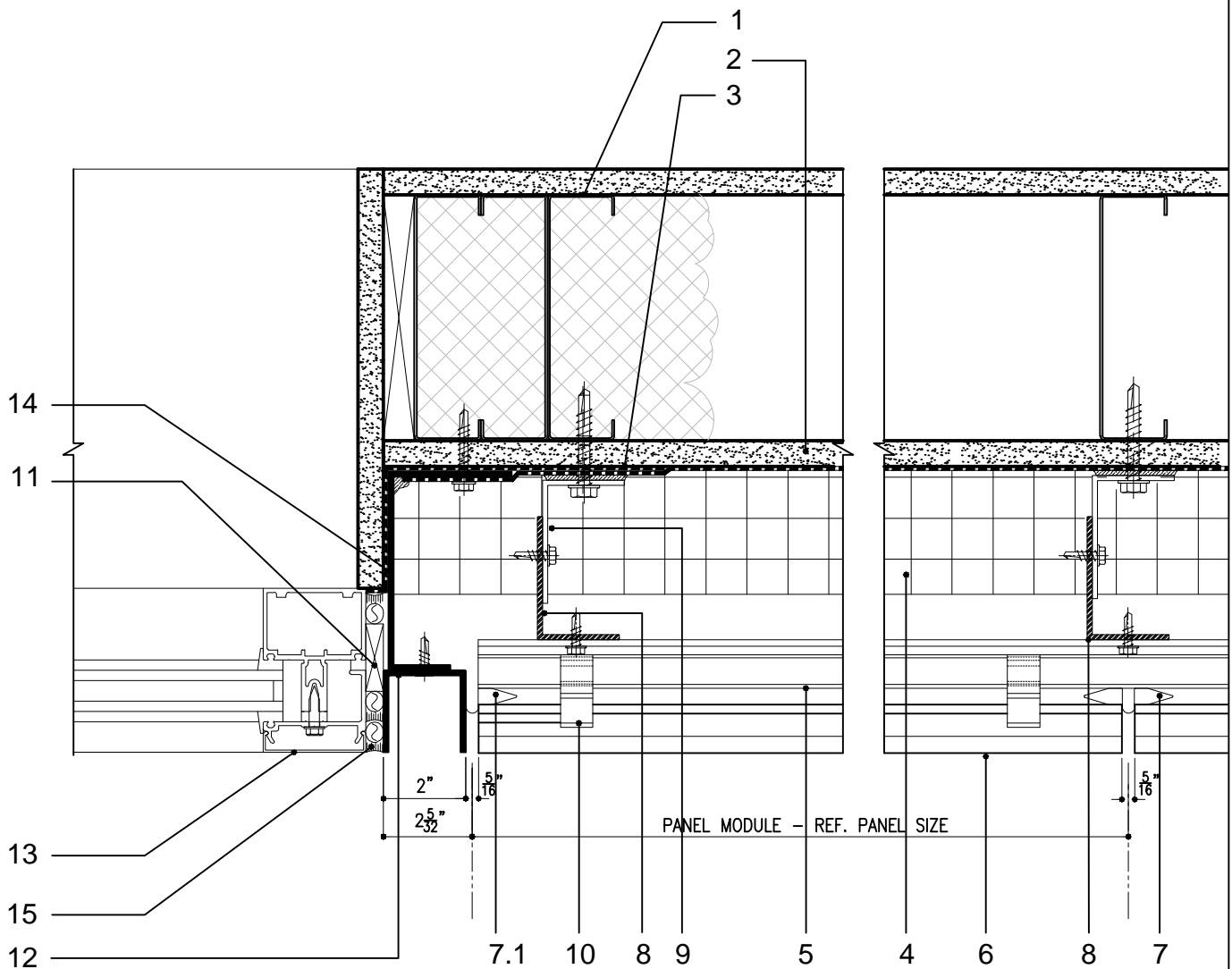
Note: This is conceptual detail; project specific details must be reviewed with Shildan



**Shildan, Inc.**

2047 Briggs Road  
Mount Laurel, NJ 08054  
T: (215) 525-4510  
F: (215) 525-4511

©2008 by Shildan, Inc.



- |  |  |
|--|--|
| <ul style="list-style-type: none"> <li>1. Metal studs</li> <li>2. Substrate</li> <li>3. Moisture barrier</li> <li>4. Mineral wool type insulation (thickness per spec.)</li> <li>5. Horizontal substructure aluminum extrusion</li> <li>6. ALPHATON GEN.06-150 ® terra cotta panel</li> <li>7. Spacer type "B"</li> <li>7.1. Spacer type "C"</li> <li>8. Continuous aluminum angle (32" or 48" o.c. for stud wall and 60" for CMU wall typ. pending design requirements &amp; engineering)</li> <li>9. Non-continuous alum. angle bracket (8" long)</li> </ul> | <ul style="list-style-type: none"> <li>10. Terra cotta fastening aluminum clip</li> <li>11. Blocking</li> <li>12. Extruded. aluminum reveal channel</li> <li>13. Window / Door</li> <li>14. Aluminum closure extruded/formed</li> <li>15. Double backer rod &amp; sealant</li> </ul> |
|--|--|

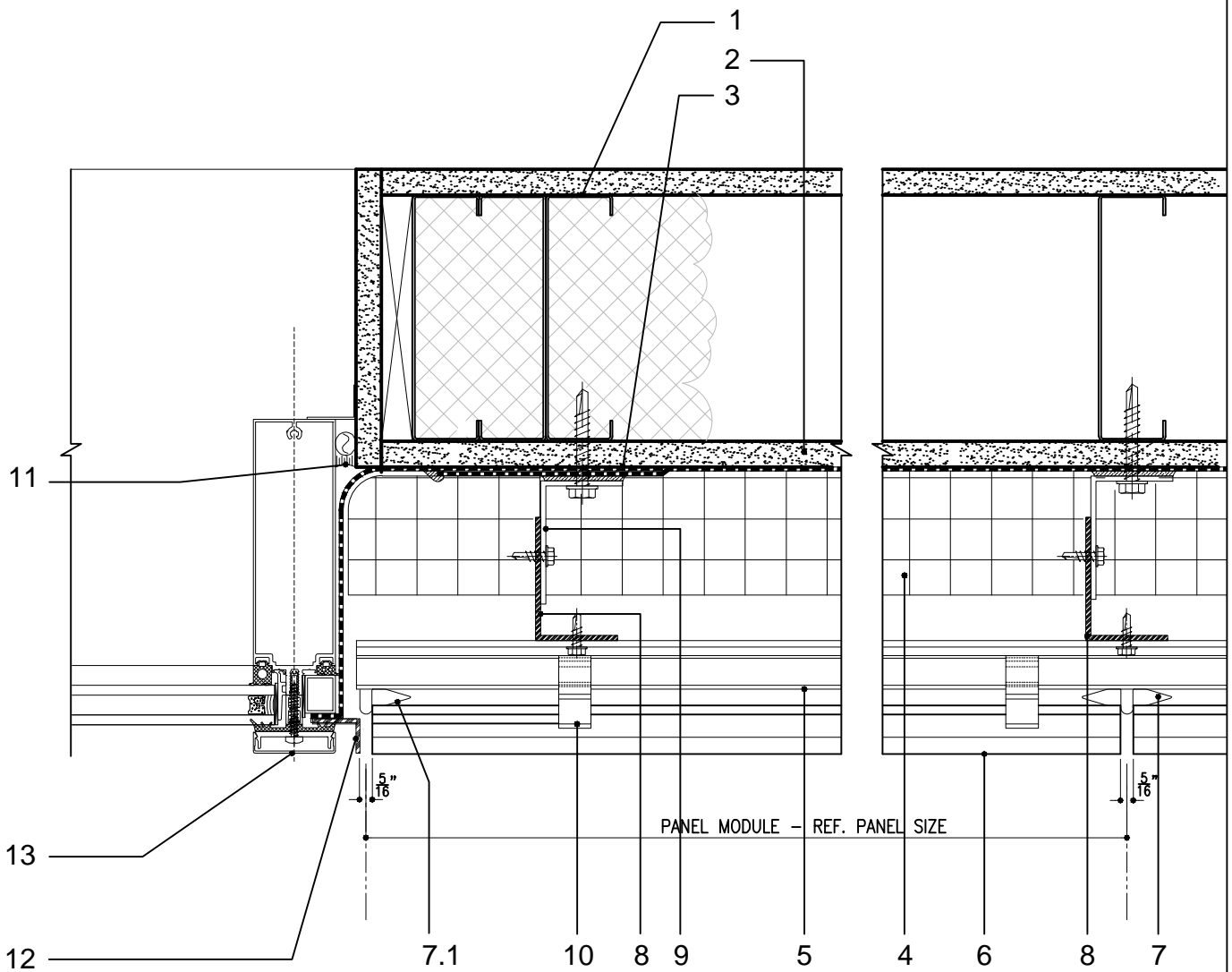
Version-8

SYSTEM: ALPHATON	DETAIL No.	OPTION.	
Gen. 06	5	e	

**JAMB DETAIL  
WITH REVEAL (WINDOW FLUSH  
WITH PANEL)**

Note: This is conceptual detail; project specific details must be reviewed with Shildan

**Shildan, Inc.**  
 2047 Briggs Road  
 Mount Laurel, NJ 08054  
 T: (215) 525-4510  
 F: (215) 525-4511  
 ©2008 by Shildan, Inc.



- |  |   |
|--|---|
| 1. Metal studs   | 9. Non-continuous alum. angle bracket (8" long) |
| 2. Substrate   | 10. Terra cotta fastening aluminum clip         |
| 3. Moisture barrier  | 11. Sealant and backer rod                      |
| 4. Mineral wool type insulation (thickness per spec.)  | 12. Aluminum closure extruded/formed            |
| 5. Horizontal substructure aluminum extrusion  | 13. Curtainwall vertical aluminum profile       |
| 6. ALPHATON GEN.06-150 ® terra cotta panel   |   |
| 7. Spacer type "B"   |   |
| 7.1. Spacer type "C"   |   |
| 8. Continuous aluminum angle (32" or 48" o.c. for stud wall and 60" for CMU wall typ. pending design requirements & engineering) |   |

Version-8

SYSTEM:  
ALPHATON

DETAIL No.

OPTION.

**Gen. 06**

**5**

**f**

JAMB DETAIL  
WITH CURTAINWALL  
CONDITION

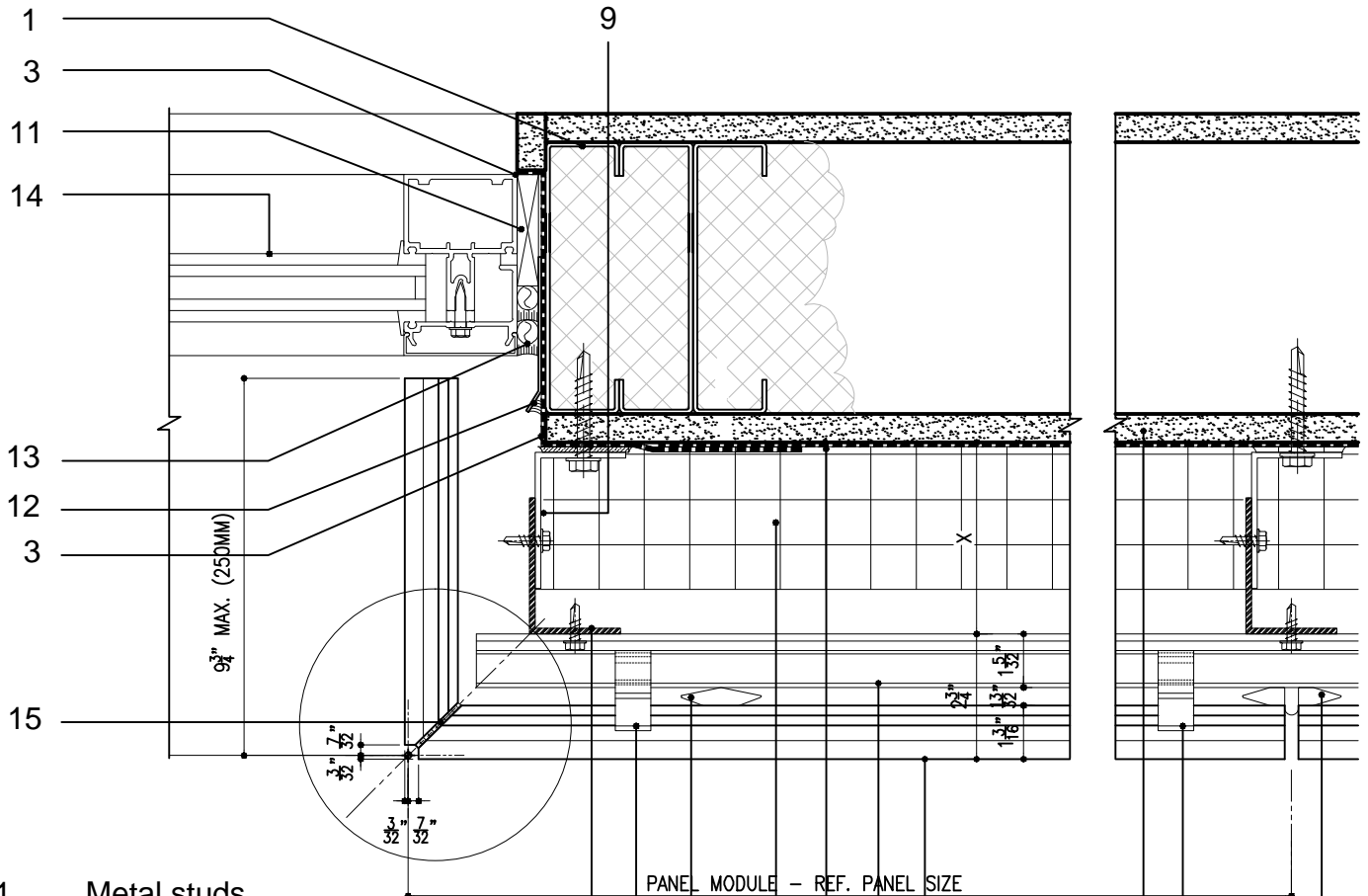
Note: This is conceptual detail; project specific details must be reviewed with Shildan



**Shildan, Inc.**

2047 Briggs Road  
Mount Laurel, NJ 08054  
T: (215) 525-4510  
F: (215) 525-4511

©2008 by Shildan, Inc.



- 1. Metal studs
- 2. Substrate
- 3. Waterproofing membrane
- 4. Mineral wool type insulation (thickness per spec.)
- 5. Horizontal substructure aluminum extrusion
- 6. ALPHATON GEN.06-150 ® terra cotta panel
- 7. Spacer type "B"
- 7.1. Spacer type "A"
- 8. Continuous aluminum angle (32" or 48" o.c. for stud wall and 60" for CMU wall typ. pending design requirements & engineering)
- 9. Non-continuous alum. angle bracket (8" long)
- 10. Terra cotta fastening aluminum clip
- 11. Blocking
- 12. Formed aluminum flashing trim w/ sealant
- 13. Double backer rod & sealant
- 14. Window / Door
- 15. Bonding agent at mitered corner
- 16. Alum Spline insert at core holes

Version-8		
SYSTEM: ALPHATON	DETAIL No.	OPTION.
<b>Gen. 06</b>	<b>5</b>	<b>g</b>

JAMB DETAIL  
PANEL RETURN

Note: This is conceptual detail; project specific details must be reviewed with Shildan



**Shildan, Inc.**  
2047 Briggs Road  
Mount Laurel, NJ 08054  
T: (215) 525-4510  
F: (215) 525-4511  
©2008 by Shildan, Inc.

**SHILDAN**  
Terracotta Rainscreen